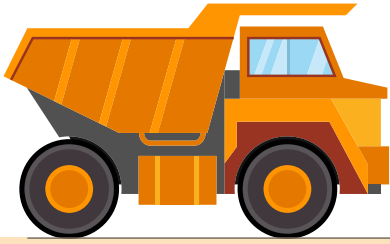


# CONSTRUCTION SAFETY

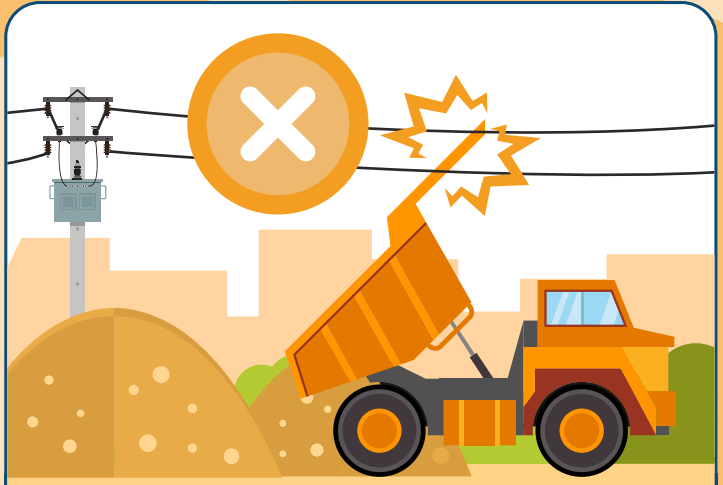
## TRUCK DRIVERS, HEAVY ELECTRICAL SAFETY



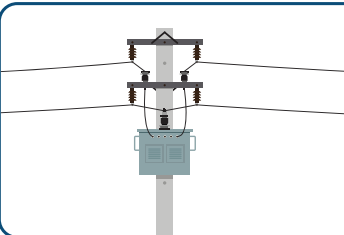
According to the Occupational Safety and Health Administration, **truck drivers of heavy trucks have a high number of workplace electrical fatalities**. A total of **76%** of these fatalities occurred from **contact with overhead power lines**. 70% of all worker electrical fatalities occur in non-electrical occupations.



**76%** of truck drivers, heavy workplace electrical fatalities occurred from **contact with overhead power lines**.



Keep raised truck beds at least **10 feet** away from all power lines.



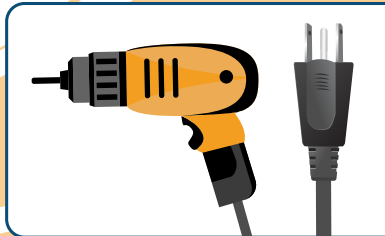
**Locate and identify utilities**, such as overhead power lines and underground wires, **before starting work**.



**Look for overhead power lines** when operating any equipment.



Always use **ground-fault protection**.

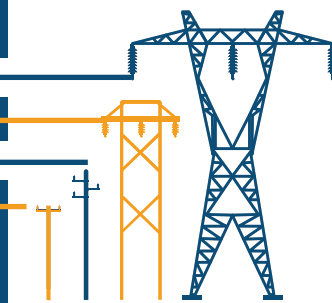


**Do not operate portable electric tools** unless grounded or double insulated.

### Voltage Safe Distance

<b>500 Kv – 800 Kv</b>	<b>19 – 24 Ft</b>
<b>230 Kv – 362 Kv</b>	<b>13 – 16 Ft</b>
<b>41.1 Kv – 169 Kv</b>	<b>10 – 12 Ft</b>
<b>&lt;50 v – 46 Kv</b>	<b>10 Ft</b>

Know and maintain **safe distances** from power lines.



**Be aware of energized equipment or parts near you**. Many fatalities occur from workers **accidentally** coming in contact with energized equipment or parts near them.