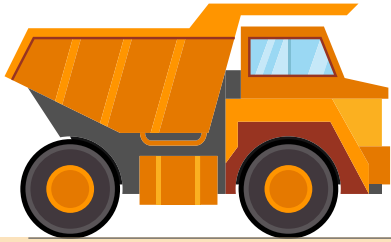


CONSTRUCTION SAFETY

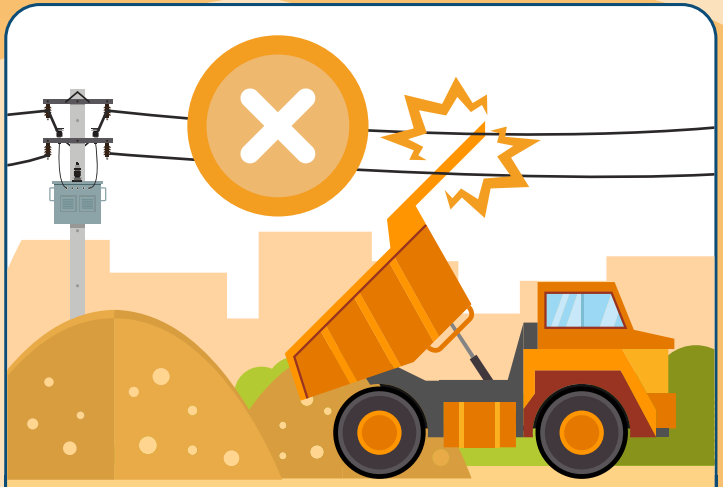
HEAVY TRUCK DRIVERS ELECTRICAL SAFETY



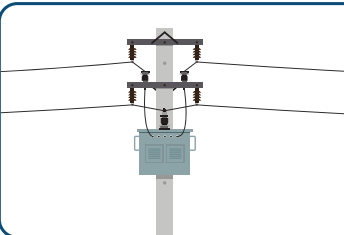
According to the Occupational Safety and Health Administration, truck drivers of heavy trucks have a high number of workplace electrical fatalities. A total of 76% of these fatalities occurred from contact with overhead power lines. 70% of all worker electrical fatalities occur in non-electrical occupations.



76% of heavy truck drivers electrical fatalities occurred from **contact with overhead power lines**.



Keep raised truck beds at least **10 feet** away from all power lines.



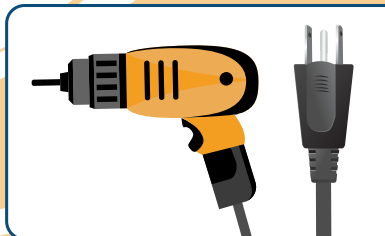
Locate and identify utilities, such as overhead power lines before starting work. **Call 811 before you dig**.



Look for overhead power lines when operating any equipment.



Always use **ground-fault protection**.



Do not operate portable electric tools unless grounded or double insulated.

Voltage Safe Distance

*Kilovolt (Kv)

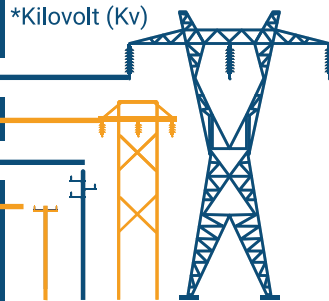
500 Kv – 800 Kv 19 – 24 Ft

230 Kv – 362 Kv 13 – 16 Ft

41.1 Kv – 169 Kv 10 – 12 Ft

<50 v – 46 Kv 10 Ft

Know and maintain **safe distances** from power lines.



Be aware of energized equipment or parts near you. Many fatalities occur from workers **accidentally** coming in contact with energized equipment or parts near them.