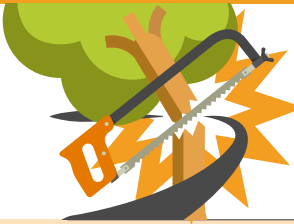
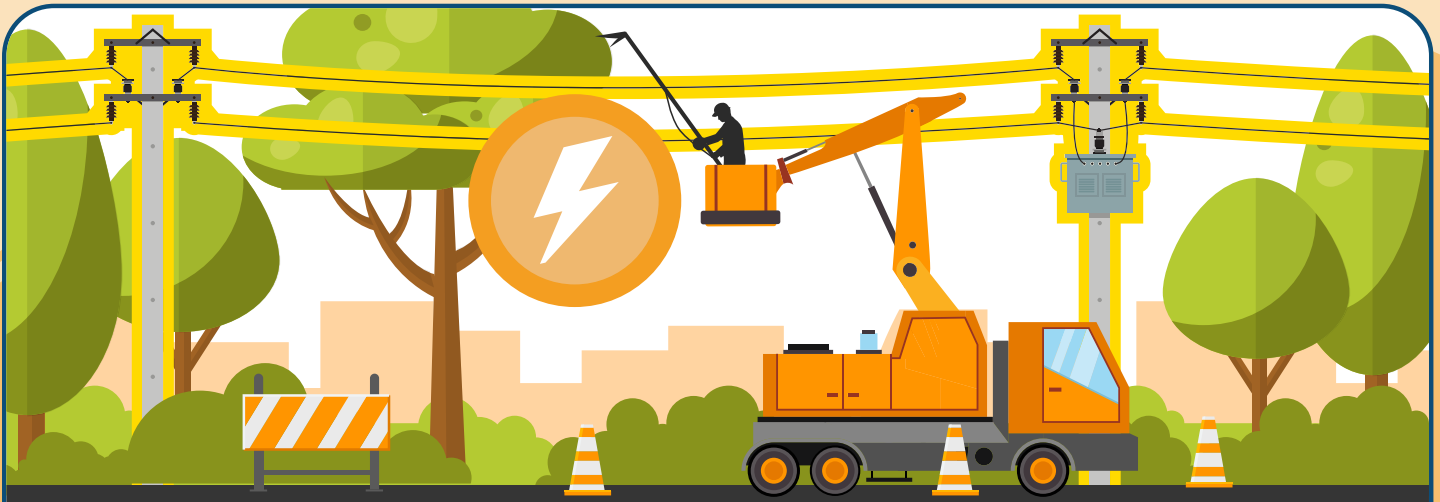


# CONSTRUCTION SAFETY

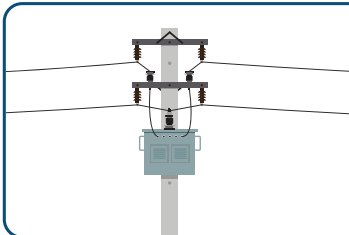
## TREE TRIMMING ELECTRICAL SAFETY



According to the Occupational Safety and Health Administration (OSHA), tree trimming occupations have **some of the highest numbers of workplace electrical fatalities**. A total of **84%** of these workplace fatalities occurred when tree trimmers **came in contact with overhead power lines**. 70% of all worker electrical fatalities occur in non-electrical occupations.



**84%** of tree trimming workplace electrical fatalities occurred from **contact with overhead power lines**.



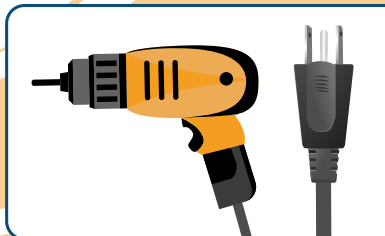
**Locate and identify utilities** such as overhead power lines and underground wires **before starting work**.



**Look for overhead power lines** when operating any equipment.



Always use **ground-fault protection**.

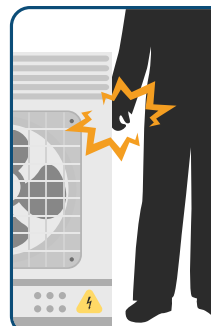
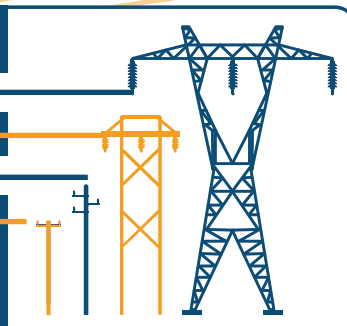


**Do not operate portable electric tools** unless grounded or double insulated.

### Voltage Safe Distance

|                         |                   |
|-------------------------|-------------------|
| <b>500 Kv – 800 Kv</b>  | <b>19 – 24 Ft</b> |
| <b>230 Kv – 362 Kv</b>  | <b>13 – 16 Ft</b> |
| <b>41.1 Kv – 169 Kv</b> | <b>10 – 12 Ft</b> |
| <b>&lt;50 v – 46 Kv</b> | <b>10 Ft</b>      |

Know and maintain **safe distances** from power lines.



**Be aware of energized equipment or parts near you.** Many fatalities occur from workers **accidentally** coming in contact with energized equipment or parts near them.