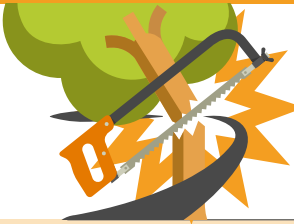
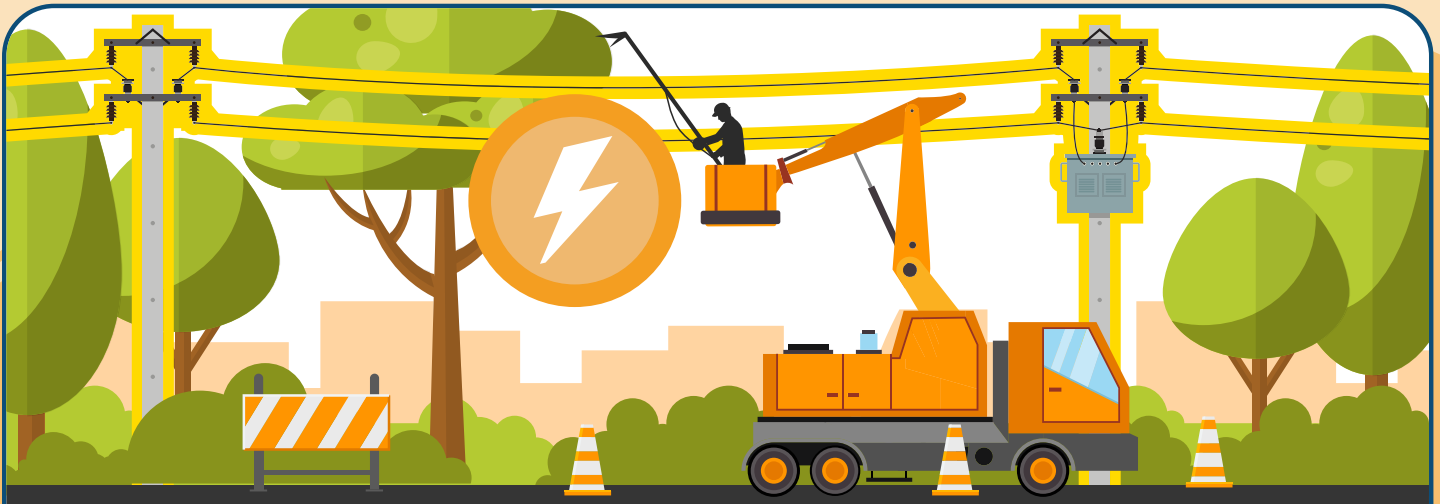


CONSTRUCTION SAFETY

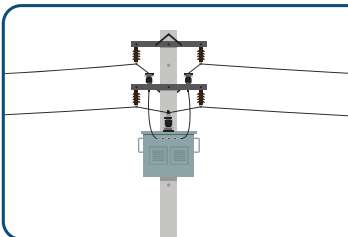
TREE TRIMMING ELECTRICAL SAFETY



According to the Occupational Safety and Health Administration (OSHA), tree trimming occupations have **some of the highest numbers of workplace electrical fatalities**. A total of **84%** of these workplace fatalities occurred when tree trimmers **came in contact with overhead power lines**. 70% of all worker electrical fatalities occur in non-electrical occupations.



84% of tree trimming workplace electrical fatalities occurred from **contact with overhead power lines**.



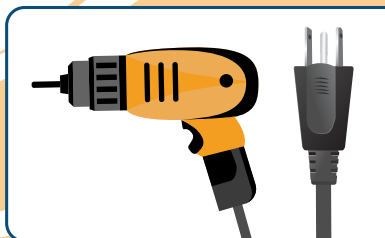
Locate and identify utilities, such as overhead power lines before starting work. **Call 811 before you dig.**



Look for overhead power lines when operating any equipment.



Always use **ground-fault protection**.



Do not operate portable electric tools unless grounded or double insulated.

Voltage Safe Distance

*Kilovolt (Kv)

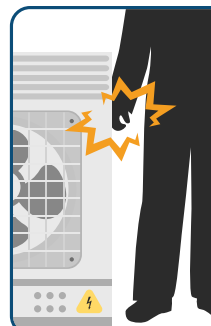
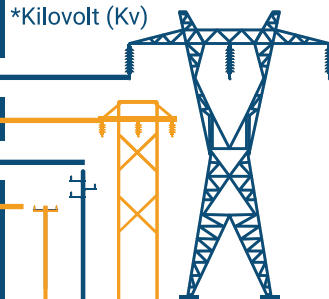
500 Kv – 800 Kv 19 – 24 Ft

230 Kv – 362 Kv 13 – 16 Ft

41.1 Kv – 169 Kv 10 – 12 Ft

<50 v – 46 Kv 10 Ft

Know and maintain **safe distances** from power lines.



Be aware of energized equipment or parts near you. Many fatalities occur from workers **accidentally** coming in contact with energized equipment or parts near them.