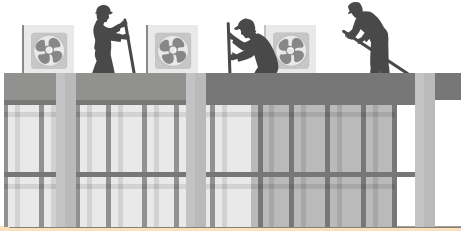
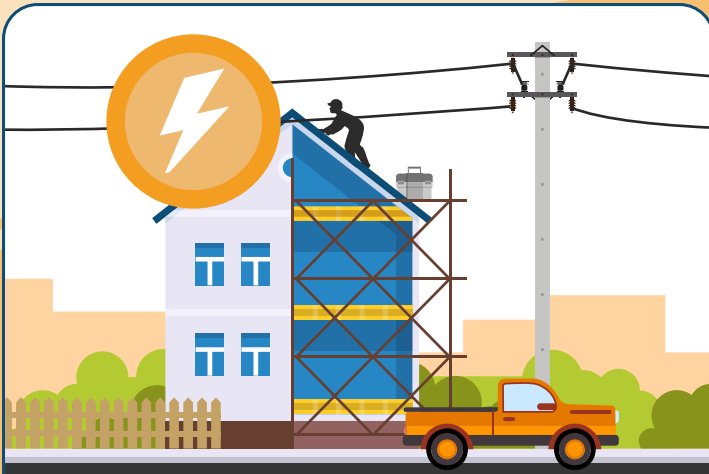


# CONSTRUCTION SAFETY

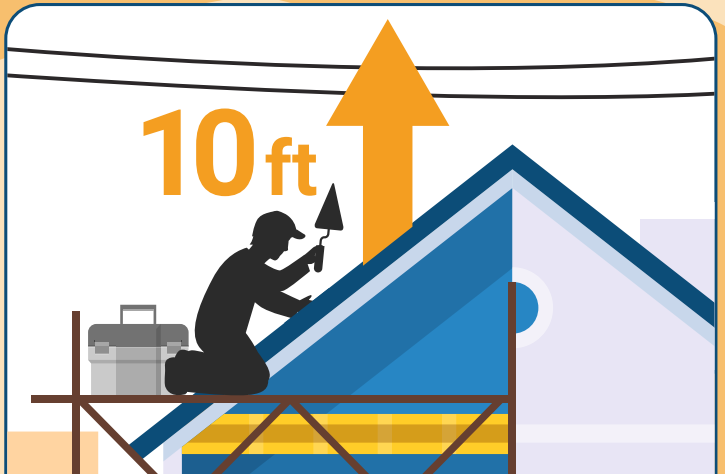
## ROOFERS ELECTRICAL SAFETY



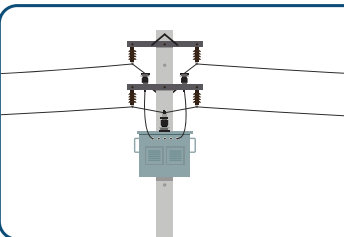
According to the Occupational Safety and Health Administration, **roofers have a high number of workplace electrical fatalities**. A total of **81%** of these fatalities occurred from **contact with overhead power lines**. 70% of all worker electrical fatalities occur in non-electrical occupations.



**81%** of roofer workplace electrical fatalities occurred from **contact with overhead power lines**.



Keep yourself and your tools at least **10 feet** away from all power lines.



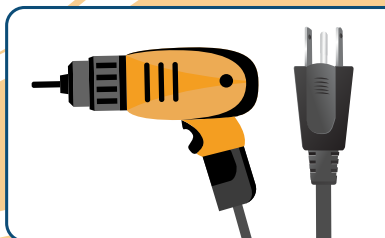
**Locate and identify utilities**, such as overhead power lines before starting work. **Call 811 before you dig**.



**Look for overhead power lines** when operating any equipment.



Always use **ground-fault protection**.



**Do not operate portable electric tools** unless grounded or double insulated.

### Voltage Safe Distance

\*Kilovolt (Kv)

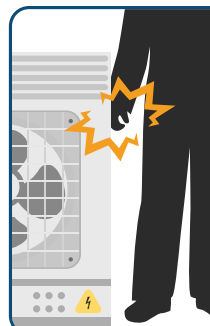
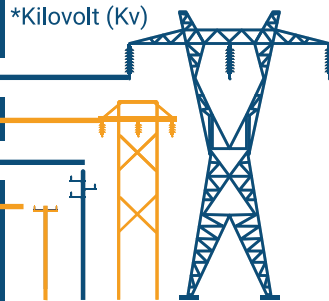
**500 Kv – 800 Kv 19 – 24 Ft**

**230 Kv – 362 Kv 13 – 16 Ft**

**41.1 Kv – 169 Kv 10 – 12 Ft**

**<50 v – 46 Kv 10 Ft**

Know and maintain **safe distances** from power lines.



**Be aware of energized equipment or parts near you**. Many fatalities occur from workers **accidentally** coming in contact with energized equipment or parts near them.