



**Electrical Safety Foundation International
Workplace Electrical Injury & Fatality Statistics**

Compiled by the Electrical Safety Foundation International using data from the U.S. Department of Labor, Bureau of Labor Statistics, in cooperation with State, New York City, District of Columbia, and Federal agencies, CFI, 2003-2019



Workplace Injury & Fatality Statistics

Tables

- Table 01 – Fatalities by Events, 2003 – 2020
- Table 02 – Nonfatal Electrical Injuries Involving Days Away from Work by Event, Private Industry, 1992 – 2020
- Table 03 – Median Number of Days Away from Work, Nonfatal Injuries, 2011 – 2020
- Table 04 – Fatal Occupational Injuries by Selected Worker Characteristics and Selected Event or Exposure, 2011 – 2020
- Table 05 – Exposure – Nonfatal Occupational Injuries and Illnesses by Selected Worker Characteristics and Selected Event or Exposure, 2011 – 2020
- Table 06 – Shock – Nonfatal Occupational Injuries and Illnesses by Selected Worker Characteristics and Selected Event or Exposure, 2011 – 2020
- Table 07 – Burns – Nonfatal Occupational Injuries and Illnesses by Selected Worker Characteristics and Selected Event or Exposure, 2011 – 2020

Charts

- Chart 01 – Fatalities by Events, 2003 – 2020
- Chart 02 – Nonfatal Electrical Injuries Involving Days Away from Work by Event, Private Industry, 1992 – 2020
- Chart 03 – Number of Nonfatal Electrical Injuries, Private Industry, by Nature of Injury, Electric Shock, Electrical Burns, 2003 – 2020
- Chart 04 – Fatality Rates for All Events vs. Electrical Events, All Ownerships, 2003 – 2020
- Chart 05 – Rates of Nonfatal Electrical Injury Involving Days Away from Work for Selected Industries by Event, Private Industry, 2003 – 2020
- Chart 06 – Electrical Fatalities by Age Group as Percentage of Fatalities for All Events, All Ownerships, 2011 – 2020
- Chart 07 – Rate of Nonfatal Electrical Shock Injury Involving Days Away from Work for Selected Industries, Private Industry, 2003 – 2020
- Chart 08 – Rate of Nonfatal Electrical Burn Injury Involving Days Away from Work for Selected Industries, Private Industry, 2003 – 2020
- Chart 09 – Electrical Fatalities vs. Total Hours Worked, All Ownerships, 2011 – 2020
- Chart 10 – Electrical Injuries vs. Total Hours Worked, All Ownerships, 2011 – 2020

Table 2

**Nonfatal Electrical Injuries Involving Days Away from
Work, by Event, Private Industry, 1992 - 2020**

Year	Total
1992	4,806
1993	4,995
1994	6,018
1995	4,744
1996	4,126
1997	3,710
1998	3,910
1999	4,224
2000	3,704
2001	3,394
2002	2,967
2003	2,390
2004	2,650
2005	2,950
2006	2,620
2007	2,540
2008	2,490
2009	2,620
2010	1,890
2011	2,250
2012	1,700
2013	2,090
2014	1,850
2015	2,480
2016	1,640
2017	2,210
2018	1,560
2019	1,900
2020	2,220
Total	86,648

Compiled by the Electrical Safety Foundation International
using data from the U.S. Bureau of Labor Statistics,
CFOI, 1992-2020

Table 3

Median Number of Days Away from Work for NonFatal Electrical injuries, by Event, Private Industry, 2011 - 2020											
Event	Event Code	Electrocutions, Electric Shocks									
		2011	2012	2013	2014	2015	2016	2017	2018	2019	2020
Exposure to electricity	51	6	4	16	4	5	5	10	4	9	3
Direct Exposure to Electricity	511	12	4	35	10	5	7	4	4	9	2
Direct Exposure to Electricity, 220 Volts or less	5111	6	4	3	9	5	2	4	4	4	3
Direct Exposure to Electricity, Greater than 220 Volts	5112	45	2	24	10	2	22	12	7	29	7
Indirect Exposure to Electricity	512	5	5	3	1	20	5	4	2	10	5
Indirect Exposure to Electricity, 220 Volts or Less	5121	2	9	2	1	5	5	4	2	17	5
Indirect Exposure to Electricity, Greater than 220 Volts	5122	5	6	63	10	49	2	20	22	3	-

Compiled by the Electrical Safety Foundation International using data from the U.S. Department of Labor, Bureau of Labor Statistics, in cooperation with State, New York City, District of Columbia, and Federal agencies, Census of Fatal Occupational Injuries, 2011-2020

Table 4

Fatal Occupational Injuries by Selected Workers Characteristics and Selected Event or Exposure, All U.S., All Ownerships, 2011 - 2020

Characteristic	All Events	Exposure to Electricity Code (51XXXX)									
	2020	2011	2012	2013	2014	2015	2016	2017	2018	2019	2020
Total:	4,764	174	156	141	154	134	154	136	160	166	126
Employee Status:											
Wage and Salary Workers (1)	3,864	141	125	114	126	107	114	101	129	141	103
Self-Employed (2)	900	33	31	27	28	27	40	35	31	25	23
Gender:											
Women	387	5	-	-	2	-	4	-	2	4	1
Men	4,377	169	154	141	152	134	150	136	158	162	125
Age:											
Under 16 Years	14	3	-	-	-	-	-	-	-	-	-
16 - 17 Years	12	-	-	-	-	-	1	1	1	-	-
18 - 19 Years	66	3	3	-	-	1	3	4	-	-	-
20 - 24 Years	260	16	17	11	16	12	14	14	10	18	9
25 - 34 Years	833	47	44	42	38	34	41	35	50	46	41
35 - 44 Years	898	42	41	35	36	30	35	27	48	44	26
45 - 54 Years	954	44	35	31	33	36	32	29	23	29	23
55 - 64 Years	1,051	12	10	16	23	14	21	19	22	22	21
65 Years and Over	676	6	4	6	6	7	7	7	6	-	-
Race or Ethnic Origin (3):											
White non-Hispanic	2,898	117	111	95	103	93	103	88	105	90	68
Black or African-American non-Hispanic	541	7	7	9	10	9	10	10	12	13	-
Hispanic or Latino	1,072	47	35	35	38	31	38	33	41	53	50
American Indian or Alaska Native non-Hispanic	32	-	-	-	-	-	-	-	-	-	-
Asian non-Hispanic	150	-	-	-	-	-	3	-	-	-	-

Native Hawaiian or Pacific Islander non-Hispanic	8	-	-	-	-	-	-	-	-	-	-	-
Person of multiple races non-Hispanic	14	-	-	-	-	-	-	-	-	-	-	-
Other races or not reported non-Hispanic	49	-	-	-	-	-	-	-	-	-	-	-
Primary Source (4) (5):												
Chemicals and Chemical products	461	-	-	-	-	-	-	-	-	-	-	-
Containers, Furniture, and Fixtures	73	7	3	-	8	7	6	-	-	-	-	-
Machinery	354	26	29	17	16	15	26	14	22	-	23	-
Agriculture and Garden Machinery	57	1	3	-	-	-	-	1	-	-	-	-
Construction, Logging, and Mining Machinery	144	4	3	4	3	-	-	-	4	-	-	-
Material and Personnel Handling Machinery	100	8	9	-	4	8	8	5	5	-	6	-
Parts and Materials	186	84	71	79	66	72	58	73	66	-	65	-
Machine Tool and Electric Parts	77	74	58	71	60	66	55	64	58	-	58	-
Persons, Plants, Animals, and Minerals	886	7	3	4	-	-	5	1	6	4	-	-
Person-other than Injured or Ill Worker	414	1	-	-	-	-	-	-	-	-	-	-
Relative or Domestic Partner of Injured or Ill Worker	20	-	-	-	-	-	-	-	-	-	-	-
Co-worker or work associate of Injured or Ill Worker	61	1	-	-	-	-	-	-	-	-	-	-
Assailant, Suspect, Inmate	230	-	-	-	-	-	-	-	-	-	-	-
Robber	94	-	-	-	-	-	-	-	-	-	-	-
Plants, Trees, Vegetation -- not Processed	145	6	3	4	-	-	5	1	6	-	-	-
Tree, Logs, Limbs	130	6	3	4	-	-	5	1	6	-	-	-
Structures and Surfaces	575	6	7	5	9	3	-	4	6	9	-	-
Buildings -- Office, Plant, Residential	42	-	-	-	-	-	-	-	-	-	-	-
Structures other than Buildings	88	-	4	-	7	-	1	4	4	5	-	-
Scaffold Staging	56	2	-	-	-	-	1	1	-	-	-	-
Other Structural Elements	183	-	1	-	-	-	-	-	-	-	-	-
Roofs	145	-	-	-	-	-	-	-	-	-	-	-
Tool, Instruments and Equipment	186	29	21	20	27	22	29	24	27	29	18	-
Ladders	161	9	11	4	8	10	11	6	9	-	-	-
Vehicles	1,916	11	16	13	22	5	14	9	22	-	-	-
Highway Vehicles Motorized	1,462	8	14	11	20	4	12	7	17	-	-	-
Passenger Vehicles -- Automobiles, Buses, and Passenger Vans	257	-	-	-	-	-	-	-	-	-	-	-
Trucks -- motorized, freight hauling, and utility	889	7	14	11	18	4	12	7	16	-	-	-
Multi-purpose Highway Vehicles	309	-	-	-	2	-	-	-	1	-	-	-

Off-Road and Industrial Vehicles -- Powered	266	3	1	-	-	-	2	1	5	-	-
Industrial Vehicles, Material Hailing, and Transport -- Powered	84	-	1	-	-	-	-	1	4	-	-
Forklift, Order Picker, Platform Truck -- Powered	78	-	1	-	-	-	-	1	4	-	-
Tractors, PTOs	125	-	-	-	-	-	2	-	-	-	-
Secondary Source (4) (6):											
Chemicals and Chemical products	40	-	-	-	-	-	-	-	-	-	-
Containers, Furniture, and Fixtures	48	-	-	-	-	-	-	-	-	-	-
Machinery	147	4	3	-	4	-	-	3	1	-	-
Parts and Materials	239	73	73	49	63	47	63	51	72	72	46
Machine, Tool, and Electric Parts	85	71	72	48	62	46	63	51	72	72	-
Persons, Plants, Animals, and Minerals	224	-	-	1	-	-	-	-	-	-	-
Plants, Trees, Vegetations -- Not Processed	179	-	-	1	-	-	-	-	-	-	-
Trees, Logs, Limbs	176	-	-	1	-	-	-	-	-	-	-
Structures and Surfaces	984	1	-	3	-	-	-	-	-	-	-
Confined Spaces	49	1	-	3	-	-	-	-	-	-	-
Structures other than Buildings	165	-	-	-	-	-	-	-	-	-	-
Floors, Walkways, Ground Surfaces	642	-	-	-	-	-	-	-	-	-	-
Tools, Instruments, and Equipment	581	-	-	-	-	-	-	-	-	-	3
Vehicles	724	1	2	-	-	3	-	3	-	-	-
Highway Vehicles Motorized	645	1	2	-	-	3	-	2	-	-	-
Off-Road and Industrial vehicles -- Powered	27	-	-	-	-	-	-	1	-	-	-
Nature (4):											
Traumatic Injuries to Bones, Nerves, Spinal Cord	193	-	-	-	-	-	-	-	-	-	-
Traumatic Injuries to Muscles, Tendons, Ligaments, Joints, ETC.	13	-	-	-	-	-	-	-	-	-	-
Open Wounds	548	-	-	-	-	-	-	-	-	-	-
Gunshot Wounds	448	-	-	-	-	-	-	-	-	-	-
Surface Wounds and Bruises	7	-	-	-	-	-	-	-	-	-	-
Burns and Corrosions	63	3	-	6	7	-	-	-	-	-	-
Intracranial Injuries	694	-	-	-	-	-	-	-	-	-	-
Effects of Environmental Conditions	57	-	-	-	-	-	-	-	-	-	-
Multiple Traumatic Injuries and Disorders	1,771	-	-	-	-	3	-	-	-	-	-

Transportations and Material Moving Occupations	1,282	8	5	3	10	7	-	4	10	11	7
Military Specific Occupations (8)	-	-	-	-	-	-	-	1	-	-	-
Industry (9):											
Private Industry	4,349	166	152	137	147	130	151	131	157	154	118
Goods producing	-	113	98	94	101	97	101	85	113	-	-
Natural Resources and Mining (10)	589	24	21	14	15	9	11	7	16	-	13
Constructions	1,008	69	66	71	74	81	82	71	86	-	53
Manufacturing	340	20	11	9	12	7	8	7	11	-	10
Service-Providing	-	53	54	43	46	33	50	46	44	-	-
Trade, Transportation, and Utilities	1,254	16	16	13	16	9	9	12	6	15	-
Information	31	3	1	-	-	-	-	-	-	-	-
Financial Activities	93	1	3	-	3	-	-	-	1	-	4
Professional and Business Services	-	23	30	20	19	18	28	20	29	-	-
Education and Health Services	145	-	-	-	-	-	-	1	-	1	-
Leisure and Hospitality	219	4	-	3	6	-	5	7	-	-	-
Other Services	188	5	-	5	-	-	4	4	5	-	3
Government (11)											
Federal Government	415	8	4	4	7	4	3	5	3	12	-
State Government	95	-	-	-	-	-	-	-	-	-	-
Local Government	67	3	-	-	-	2	1	-	-	-	-
Local Government	251	5	-	3	6	-	-	3	3	8	-

Footnotes

- (1) May include volunteers and workers receiving other types of compensation.
- (2) Includes self-employed workers owners of unincorporated businesses and farms paid and unpaid family workers and may include some owners of incorporated businesses or members of partnerships.
- (3) Persons identified as Hispanic or Latino may be of any race. The race categories shown exclude data for Hispanics and Latinos.
- (4) Based on the BLS Occupational Injury and Illness Classification System (OIICS) 2.01 implemented for 2011 data forward.
- (5) The primary source of a fatal occupational injury is the object substance person bodily motion or exposure which most directly led to produced or inflicted the injury or illness.
- (6) The secondary source of a fatal occupational injury is the object substance person or exposure other than the source if any which most actively generated the source or contributed to the injury or illness.
- (7) CFOI has used several versions of the Standard Occupation Classification (SOC) system since 2003 to define occupation. For more information on the version of SOC used in this year see our definitions page: <http://www.bls.gov/iif/oshcfdef.htm>.

(8) Includes fatal injuries to persons identified as resident armed forces regardless of individual occupation listed.

(9) CFI has used several versions of the North American Industry Classification System (NAICS) since 2003 to define industry. For more information on the version of NAICS used in this year see our definitions page: <http://www.bls.gov/iif/oshcdef.htm>.

(10) Includes fatal injuries at all establishments categorized as Mining (Sector 21) in the North American Industry Classification System including establishments not governed by the Mine Safety and Health Administration (MSHA) rules and reporting such as those in Oil and Gas Extraction.

(11) Includes all fatal occupational injuries meeting this ownership criterion across all specified years regardless of industry classification system.

NOTE: Totals for major categories may include subcategories not shown separately. Dashes indicate no data reported or data that do not meet publication criteria. N.e.c. means "not elsewhere classified." CFI fatality counts exclude illness-related deaths unless precipitated by an injury event. Data for all years are final unless footnoted by "P" for preliminary data.

SOURCE: U.S. Department of Labor, Bureau of Labor Statistics, in cooperation with State, New York City, District of Columbia, and Federal agencies, Census of Fatal Occupational Injuries, Dec 16, 2021

Table 5

Number of NonFatal Occupational Injuries and Illnesses Involving Days Away from Work (1) by Selected Worker and Case Characteristics and Event or Exposure. All of U.S., Private Industry, 2011 - 2020

Characteristic	All Events	Exposure to Electricity Code (51XXXX)									
	2020	2011	2012	2013	2014	2015	2016	2017	2018	2019	2020
Total:	1,176,340	2,250	1,700	2,090	1,850	2,480	1,640	2,210	1,560	1,900	2,220
Gender:											
Men	577,990	1,910	1,400	1,750	1,530	2,190	1,290	1,650	1,190	1,510	1,990
Women	585,540	350	280	330	310	270	330	550	350	380	220
Age:											
Under 14	-	-	-	-	-	-	-	-	-	-	-
14 - 15	180	-	-	-	-	-	-	-	-	-	-
16 - 19	32,790	30	-	40	80	20	30	20	30	-	50
20 - 24	108,800	280	250	230	210	260	360	80	80	300	490
25 - 34	250,050	520	480	450	560	590	470	850	410	470	540
35 - 44	232,790	560	300	660	580	590	380	480	440	230	490
45 - 54	241,620	640	430	500	270	540	190	290	210	610	360
55 - 64	217,100	150	110	190	140	450	150	470	350	270	160
65 Years and Over	53,480	20	70	-	-	-	-	20	20	20	20
Occupation (6):											
Management, Business, Financial	49,930	50	90	20	-	40	30	30	30	-	50
Computer, Engineering and Science	6,860	30	30	30	30	20	20	40	40	-	30
Education, Legal, Community Service, Arts, and Media	21,610	-	-	-	40	-	-	-	70	90	-
Healthcare Practitioners and Technical	177,650	30	30	80	20	40	20	370	30	50	20
Service	328,020	380	200	380	270	760	280	740	350	150	560
Sales and Related	60,130	30	50	30	60	60	80	40	40	110	20
Office and Administrative Support	49,770	50	60	30	20	70	30	-	20	-	20
Farming, Fishing, and Forestry	15,990	20	-	20	-	-	30	-	-	-	-
Construction and Extraction	69,790	580	350	460	600	570	420	330	200	510	470

12:01 AM - 4:00 AM	26,200	40	40	30	50	50	20	30	30	30	20
4:01 AM - 8:00 AM	88,180	230	160	130	170	480	150	160	70	140	140
8:01 AM - 12:00 PM	237,200	920	630	870	500	740	470	630	570	680	610
12:01 PM - 4:00 PM	176,130	460	400	510	680	380	460	670	320	420	270
4:01 PM - 8:00 PM	90,620	180	190	210	210	210	210	230	200	110	500
8:01 PM - 12:00 AM	54,270	90	100	40	100	160	70	70	250	70	120
Not Reported	503,730	350	170	290	150	460	260	440	110	440	560

Hours Worked:

Occurred Before Shift Began	5,530	-	-	-	-	-	-	-	-	-	-
Less than 1 Hour	83,950	310	180	90	60	490	80	170	140	110	50
1 - 2 Hours	72,380	170	100	130	120	260	110	150	90	180	210
2 - 4 Hours	161,700	550	470	820	340	370	310	330	370	360	330
4 - 6 Hours	133,400	300	250	280	640	340	280	540	320	380	720
6 - 8 Hours	108,390	350	300	230	350	290	250	300	240	220	220
8 - 10 Hours	56,250	130	80	160	50	180	200	60	140	110	80
10 - 12 Hours	18,430	40	80	30	70	-	30	30	50	20	30
12 - 16 Hours	11,020	-	-	-	20	20	60	130	-	-	-
More Than 16 Hours	1,380	-	-	-	-	-	-	-	-	-	-
Not Reported	523,910	410	210	330	190	530	300	500	220	520	590

Footnotes

- (1) Days away from work include those that result in days away from work with or without job transfer or restriction.
- (2) Standard Occupational Classification Manual, 2010, Office of Management and Budget
- (3) Median days away from work is the measure used to summarize the varying lengths of absences from work among the cases with days away from work. Half the cases involved more days and half involved less days than a specified median. Median days away from work are represented in actual values.
- (4) Excludes farms with fewer than 11 employees.
- (5) Data for mining (Sector 21 in the North American Industry Classification System -- United States, 2007) include establishments not governed by the Mine Safety and Health Administration (MSHA) rules and reporting, such as those in oil and gas extraction and related support activities. Data for mining operators in coal, metal, and nonmetal mining are provided to BLS by the Mine Safety and Health Administration, U.S. Department of Labor. Independent mining contractors are excluded from the coal, metal, and nonmetal mining industries. These data do not reflect the changes Occupational Safety and Health Administration made to its recordkeeping requirements effective January 1, 2002; therefore estimates for these industries are not comparable with estimates for other industries.
- (6) Data for employers in railroad transportation are provided to BLS by the Federal Railroad Administration, U.S. Department of Transportation. These data do not reflect the changes Occupational Safety and Health Administration made to its recordkeeping requirements effective January 1, 2002; therefore estimates for these industries are

not comparable with estimates for other industries.

(7) Musculoskeletal disorders (MSDs) include cases where the nature of the injury or illness is pinched nerve; herniated disc; meniscus tear; sprains, strains, tears; hernia (traumatic and nontraumatic); pain, swelling, and numbness; carpal or tarsal tunnel syndrome; Raynaud's syndrome or phenomenon; musculoskeletal system and connective tissue diseases and disorders, when the event or exposure leading to the injury or illness is overexertion and bodily reaction, unspecified; overexertion involving outside sources; repetitive motion involving microtasks; other and multiple exertions or bodily reactions; and rubbed, abraded, or jarred by vibration.

(8) Occupational Injury and Illness Classification System 2.01

NOTE: Because of rounding and data exclusion of nonclassifiable responses, data may not sum to the totals. Dashes indicate data that do not meet publication guidelines. The scientifically selected probability sample used was one of many possible samples, each of which could have produced different estimates. A measure of sampling variability for each estimate is available upon request -- please contact iifstaff@bls.gov or call (202) 691-6170. For additional information about methodology and coding structures, see the BLS Handbook of Methods chapter 9: <https://www.bls.gov/opub/hom/homch9.htm> .

SOURCE: Bureau of Labor Statistics, U.S. Department of Labor, Dec 16, 2021

Table 6

Number of NonFatal Occupational Injuries and Illnesses Involving Days Away from Work (1) by Selected Worker and Case Characteristics and Nature of Condition. All of U.S., Private Industry, 2011 - 2020

Characteristic	All Natures	Electrocutions, Electric Shocks (193XXX)									
	2020	2011	2012	2013	2014	2015	2016	2017	2018	2019	2020
Total:	1,176,340	1,290	980	1,530	1,080	1,910	960	1,330	1,080	1,390	1,610
Gender:											
Men	577,990	1,030	740	1,230	820	1,640	630	850	830	1,040	1,430
Women	585,540	250	240	300	250	250	310	470	230	340	180
Age:											
Under 14	-	-	-	-	-	-	-	-	-	-	-
14 - 15	180	-	-	-	-	-	-	-	-	-	-
16 - 19	32,790	30	-	30	80	20	30	-	-	-	-
20 - 24	108,800	170	200	170	160	180	270	40	60	230	460
25 - 34	25,050	280	290	330	380	500	250	660	300	380	390
35 - 44	232,790	220	200	570	240	400	180	310	230	150	400
45 - 54	241,260	440	180	320	160	460	110	190	180	520	270
55 - 64	217,100	80	50	120	60	330	90	120	290	110	50
65 Years and Over	53,480	-	-	-	-	-	-	-	-	-	-
Occupation (6):											
Management, Business, Financial	49,930	40	60	20	-	40	20	30	30	-	50
Computer, Engineering and Science	6,860	20	-	20	20	20	20	-	-	-	-
Education, legal, Community Service, Arts, and Media	21,610	-	-	-	40	-	-	-	-	90	-
Healthcare Practitioners and Technical	177,650	20	30	80	20	30	-	370	30	50	20
Service	328,020	310	130	300	260	730	240	390	310	120	530
Sales and Related	60,130	30	40	20	40	50	80	30	30	110	20
Office and Administrative Support	49,770	20	50	20	20	70	30	-	20	-	20
Farming, Fishing, and Forestry	15,990	-	-	20	-	-	30	-	-	-	-
Construction and Extraction	69,790	220	150	310	150	370	110	120	90	280	230

Multiple	68,560	-	-	-	-	-	-	-	-	-	-	-
All Other	9,910	-	-	-	-	-	-	-	-	-	-	-
Source of Injury, Illness (9):												
Chemicals, Chemical Products	10,710	-	-	-	-	-	-	-	-	-	-	-
Containers	92,780	20	-	-	-	-	-	-	20	-	-	-
Furniture Fixtures	30,540	50	30	90	50	200	40	-	30	20	430	-
Machinery	42,120	380	320	360	200	400	270	710	250	290	210	-
Parts and Materials	67,130	610	430	930	610	640	510	470	530	800	810	-
Person, Injured, or Ill Worker	107,350	-	-	-	-	-	-	-	-	20	-	-
Worker Motion or Position	102,560	-	-	-	-	-	-	-	-	-	-	-
Person other than Injured or Ill Workers	64,500	-	-	-	-	-	-	-	-	-	-	-
Health Care Patient	51,670	-	-	-	-	-	-	-	-	-	-	-
Floors, Walkways, Ground Surfaces	129,020	-	-	-	-	-	-	-	-	-	-	-
Handtools	35,420	100	40	30	30	260	-	-	160	30	20	-
Ladders	21,180	-	-	-	-	-	-	-	-	-	-	-
Vehicles	84,290	40	40	-	-	-	-	20	20	30	-	-
Trucks	23,820	-	-	-	-	-	-	-	-	-	-	-
Cart, Dolly, Hand Truck -- Nonpowered	10,780	-	-	-	-	-	-	-	-	-	-	-
All Other	497,290	90	90	70	160	380	90	90	80	190	120	-
Secondary Source of Injury, Illness (8):												
Containers, Furniture and Fixtures	33,630	-	-	-	-	-	-	-	-	-	-	-
Machinery	8,540	60	-	-	-	-	-	-	-	-	20	-
Computer and Peripheral Equipment	1,860	-	-	-	-	-	-	-	-	-	-	-
Tools, Instruments, and Equipment	15,520	-	-	-	50	-	30	-	-	-	-	-
Firearms, Law Enforcement, and Other Self-Defense Equipment	500	-	-	-	-	-	-	-	-	-	-	-
Vehicles	31,380	-	-	-	-	-	-	-	-	-	-	-
Highway Vehicle Motorized	22,380	-	-	-	-	-	-	-	-	-	-	-
Ice, Sleet, Snow	13,960	-	-	-	-	-	-	-	-	-	-	-
Liquid - NonChemical	16,950	30	-	50	-	-	-	-	-	-	-	-
Day of Week												
Sunday	81,880	40	30	120	80	160	30	40	90	20	-	-

Monday	219,140	180	170	180	300	290	190	160	220	180	130
Tuesday	198,680	260	130	360	200	290	210	160	200	480	630
Wednesday	204,090	190	180	140	140	270	160	120	210	310	210
Thursday	195,460	270	180	540	180	420	110	220	170	190	450
Friday	174,830	270	120	110	110	130	140	420	90	140	30
Saturday	102,260	80	160	80	70	360	120	200	110	70	150
Time of Day:											
12:01 AM - 4:00 AM	26,200	30	-	30	20	50	-	-	20	20	-
4:01 AM - 8:00 AM	88,180	150	60	80	90	420	70	70	40	90	120
8:01 AM - 12:00 PM	237,200	520	380	690	290	560	300	370	330	480	210
12:01 PM - 4:00 PM	176,130	210	270	380	330	270	240	550	190	290	190
4:01 PM - 8:00 PM	90,620	100	130	180	180	160	100	190	170	70	460
8:01 PM - 12:00 AM	54,270	70	50	30	60	140	60	50	230	40	100
Not Reported	503,730	200	80	140	110	320	190	90	100	400	510
Hours Worked:											
Occurred Before Shift Began	5,530	-	-	-	-	-	-	-	-	-	-
Less than 1 Hour	83,950	140	60	60	40	440	60	110	60	60	40
1 - 2 Hours	72,380	110	60	80	50	180	90	60	70	160	120
2 - 4 Hours	161,700	380	300	710	190	260	190	220	280	230	130
4 - 6 Hours	133,400	160	140	200	270	250	180	420	210	290	560
6 - 8 Hours	108,390	200	200	190	280	250	130	230	190	120	160
8 - 10 Hours	56,250	20	70	100	30	150	50	20	50	50	50
10 - 12 Hours	18,430	-	70	20	70	-	-	-	30	-	-
12 - 16 Hours	11,020	-	-	-	-	-	-	130	-	-	-
More Than 16 Hours	1,380	-	-	-	-	-	-	-	-	-	-
Not Reported	523,910	250	90	150	120	370	250	140	180	460	530

Footnotes

(1) Days away from work include those that result in days away from work with or without job transfer or restriction.

(2) Data are coded using the Standard Occupational Classification (SOC). For more information on the version of SOC used in this year, see our Handbook of Methods

concepts page: <https://www.bls.gov/opub/hom/soii/concepts.htm>.

(3) Median days away from work is the measure used to summarize the varying lengths of absences from work among the cases with days away from work. Half the cases involved more days and half involved less days than a specified median. Median days away from work are represented in actual values.

(4) Data are coded using the North American Industry Classification System (NAICS). For more information on the version of NAICS used in this year, see our Handbook of Methods concepts page: <https://www.bls.gov/opub/hom/soii/concepts.htm>.

(5) Excludes farms with fewer than 11 employees.

(6) Data for Mining (Sector 21 in the North American Industry Classification System) include establishments not governed by the Mine Safety and Health Administration (MSHA) rules and reporting, such as those in oil and gas extraction and related support activities. Data for mining operators in coal, metal, and nonmetal mining are provided to BLS by the Mine Safety and Health Administration, U.S. Department of Labor. Independent mining contractors are excluded from the coal, metal, and nonmetal mining industries. These data do not reflect changes the Occupational Safety and Health Administration made to its recordkeeping requirements effective January 1, 2002; therefore, estimates for these industries are not comparable to estimates of other industries.

(7) Data for employers in railroad transportation are provided to BLS by the Federal Railroad Administration, U.S. Department of Transportation. These data do not reflect the changes Occupational Safety and Health Administration made to its recordkeeping requirements effective January 1, 2002; therefore estimates for these industries are not comparable with estimates for other industries.

(8) Musculoskeletal disorders (MSDs) include cases where the nature of the injury or illness is pinched nerve; herniated disc; meniscus tear; sprains, strains, tears; hernia (traumatic and nontraumatic); pain, swelling, and numbness; carpal or tarsal tunnel syndrome; Raynaud's syndrome or phenomenon; musculoskeletal system and connective tissue diseases and disorders, when the event or exposure leading to the injury or illness is overexertion and bodily reaction, unspecified; overexertion involving outside sources; repetitive motion involving microtasks; other and multiple exertions or bodily reactions; and rubbed, abraded, or jarred by vibration.

(9) Occupational Injury and Illness Classification System 2.01

NOTE: Because of rounding and data exclusion of nonclassifiable responses, data may not sum to the totals. Dashes indicate data that do not meet publication guidelines. The scientifically selected probability sample used was one of many possible samples, each of which could have produced different estimates. A measure of sampling variability for each estimate is available upon request -- please contact iifstaff@bls.gov or call (202) 691-6170. For additional information about methodology and coding structures, see the BLS Handbook of Methods chapter 9: <https://www.bls.gov/opub/hom/homch9.htm> .

SOURCE: Bureau of Labor Statistics, U.S. Department of Labor, Dec 16, 2021

Table 7

Number of NonFatal Occupational Injuries and Illnesses Involving Days Away from Work (1) by Selected Worker and Case Characteristics and Nature of Condition. All of U.S., Private Industry, 2011 - 2020

Characteristic	All Natures	Electrical Burns (153XXX)									
	2020	2011	2012	2013	2014	2015	2016	2017	2018	2019	2020
Total:	1,176,340	1,020	740	560	780	580	760	900	490	510	620
Gender:											
Men	577,990	920	680	520	730	550	730	810	370	470	570
Women	585,540	90	50	30	50	20	20	80	120	40	50
Age:											
Under 14	-	-	-	-	-	-	-	-	-	-	-
14 - 15	180	-	-	-	-	-	-	-	-	-	-
16 - 19	32,790	-	-	20	-	-	-	-	30	-	40
20 - 24	108,800	110	50	60	6090		90	40	20	70	30
25 - 34	25,050	250	200	120	180	90	220	190	110	90	150
35 - 44	232,790	340	110	90	340	190	240	170	210	80	200
45 - 54	241,260	230	250	190	110	80	80	110	30	100	100
55 - 64	217,100	70	70	70	80	120	60	350	70	160	110
65 Years and Over	53,480	-	70	-	-	-	20	20	-	-	-
Occupation (6):											
Management, Business, Financial	49,930	-	20	-	-	-	-	-	-	-	-
Computer, Engineering and Science	6,860	-	30	-	20	-	-	30	40	-	30
Education, legal, Community Service, Arts, and Media	21,610	-	-	-	-	-	-	-	-	-	-
Healthcare Practitioners and Technical	177,650	-	-	-	-	-	-	-	-	-	-
Service	328,020	70	70	80	20	30	40	350	30	30	30
Sales and Related	60,130	-	-	-	30	-	-	-	-	-	-
Office and Administrative Support	49,770	20	-	-	-	-	-	-	-	-	-
Farming, Fishing, and Forestry	15,990	-	-	-	-	-	-	-	-	-	-
Construction and Extraction	69,790	390	210	150	460	190	310	220	100	230	260

Multiple	68,560	340	120	270	240	150	230	160	70	120	230
All Other	9,910	-	30	-	-	30	20	20	20	20	30
Source of Injury, Illness (9):											
Chemicals, Chemical Products	10,710	-	-	-	-	-	-	40	30	-	-
Containers	92,780	-	-	-	-	-	-	-	-	-	-
Furniture Fixtures	30,540	-	20	-	-	-	-	30	-	30	30
Machinery	42,120	60	70	50	40	70	90	390	80	50	40
Parts and Materials	67,130	700	570	450	660	460	520	370	310	370	480
Person, Injured, or Ill Worker	107,350	-	-	-	-	-	-	-	-	-	-
Worker Motion or Position	102,560	-	-	-	-	-	-	-	-	-	-
Person other than Injured or Ill Workers	64,500	110	-	-	-	-	-	-	-	-	-
Health Care Patient	51,670	-	-	-	-	-	-	-	-	-	-
Floors, Walkways, Ground Surfaces	129,020	-	-	-	-	-	-	-	-	-	-
Handtools	35,420	50	20	-	-	-	60	20	50	-	-
Ladders	21,180	-	-	-	-	-	-	-	-	-	-
Vehicles	84,290	-	-	-	-	-	-	-	-	-	-
Trucks	23,820	-	-	-	-	-	-	-	-	-	-
Cart, Dolly, Hand Truck -- Nonpowered	10,780	-	-	-	-	-	-	-	-	-	-
All Other	497,290	90	50	50	30	30	30	40	20	20	60
Secondary Source of Injury, Illness (8):											
Containers, Furniture and Fixtures	33,630	-	-	-	-	-	-	-	-	-	-
Machinery	8,540	20	-	-	-	20	50	-	-	-	-
Computer and Peripheral Equipment	1,860	-	-	-	-	-	-	-	-	-	-
Tools, Instruments, and Equipment	15,520	30	-	-	20	-	20	-	-	-	-
Firearms, Law Enforcement, and Other Self-Defense Equipment	500	-	-	-	-	-	-	-	-	-	-
Vehicles	31,380	-	-	-	-	-	-	-	-	-	-
Highway Vehicle Motorized	22,380	-	-	-	-	-	-	-	-	-	-
Ice, Sleet, Snow	13,960	-	-	-	-	-	-	-	-	-	-
Liquid - NonChemical	16,950	-	-	-	-	-	-	-	-	-	-
Day of Week											
Sunday	81,880	30	20	20	20	-	-	20	-	-	20

Monday	219,140	170	100	110	80	150	80	140	110	50	20
Tuesday	198,680	210	140	60	130	100	230	150	20	120	410
Wednesday	204,090	250	130	100	90	60	50	70	130	100	70
Thursday	195,460	190	220	90	70	140	130	380	60	100	40
Friday	174,830	110	120	160	370	110	120	110	130	90	20
Saturday	102,260	60	20	20	20	20	130	30	20	40	50

Time of Day:											
12:01 AM - 4:00 AM	26,200	-	30	-	20	-	-	20	-	20	20
4:01 AM - 8:00 AM	88,180	80	110	50	90	70	90	100	30	50	20
8:01 AM - 12:00 PM	237,200	410	260	180	210	180	200	260	250	200	410
12:01 PM - 4:00 PM	176,130	270	140	130	360	110	260	120	130	130	70
4:01 PM - 8:00 PM	90,620	80	60	40	30	50	110	30	30	40	40
8:01 PM - 12:00 AM	54,270	20	50	-	40	20	-	20	20	30	20
Not Reported	503,730	140	100	150	40	140	70	340	20	50	50

Hours Worked:											
Occurred Before Shift Began	5,530	-	-	-	-	-	-	-	-	-	-
Less than 1 Hour	83,950	160	130	30	20	40	20	70	70	40	-
1 - 2 Hours	72,380	80	40	50	70	80	40	90	20	20	100
2 - 4 Hours	161,700	180	190	110	140	110	110	110	90	130	190
4 - 6 Hours	133,400	140	110	80	370	90	140	120	100	80	160
6 - 8 Hours	108,390	160	110	40	70	40	130	70	40	100	60
8 - 10 Hours	56,250	110	-	60	20	30	150	50	100	70	30
10 - 12 Hours	18,430	20	20	-	-	-	20	20	20	-	20
12 - 16 Hours	11,020	-	-	-	-	20	50	-	-	-	-
More Than 16 Hours	1,380	-	-	-	-	-	-	-	-	-	-
Not Reported	523,910	170	130	180	80	150	90	370	40	60	50

Footnotes
(1) Days away from work include those that result in days away from work with or without job transfer or restriction.
(2) Data are coded using the Standard Occupational Classification (SOC). For more information on the version of SOC used in this year, see our Handbook of Methods

concepts page: <https://www.bls.gov/opub/hom/soii/concepts.htm>.

(3) Median days away from work is the measure used to summarize the varying lengths of absences from work among the cases with days away from work. Half the cases involved more days and half involved less days than a specified median. Median days away from work are represented in actual values.

(4) Data are coded using the North American Industry Classification System (NAICS). For more information on the version of NAICS used in this year, see our Handbook of Methods concepts page: <https://www.bls.gov/opub/hom/soii/concepts.htm>.

(5) Excludes farms with fewer than 11 employees.

(6) Data for Mining (Sector 21 in the North American Industry Classification System) include establishments not governed by the Mine Safety and Health Administration (MSHA) rules and reporting, such as those in oil and gas extraction and related support activities. Data for mining operators in coal, metal, and nonmetal mining are provided to BLS by the Mine Safety and Health Administration, U.S. Department of Labor. Independent mining contractors are excluded from the coal, metal, and nonmetal mining industries. These data do not reflect changes the Occupational Safety and Health Administration made to its recordkeeping requirements effective January 1, 2002; therefore, estimates for these industries are not comparable to estimates of other industries.

(7) Data for employers in railroad transportation are provided to BLS by the Federal Railroad Administration, U.S. Department of Transportation. These data do not reflect the changes Occupational Safety and Health Administration made to its recordkeeping requirements effective January 1, 2002; therefore estimates for these industries are not comparable with estimates for other industries.

(8) Musculoskeletal disorders (MSDs) include cases where the nature of the injury or illness is pinched nerve; herniated disc; meniscus tear; sprains, strains, tears; hernia (traumatic and nontraumatic); pain, swelling, and numbness; carpal or tarsal tunnel syndrome; Raynaud's syndrome or phenomenon; musculoskeletal system and connective tissue diseases and disorders, when the event or exposure leading to the injury or illness is overexertion and bodily reaction, unspecified; overexertion involving outside sources; repetitive motion involving microtasks; other and multiple exertions or bodily reactions; and rubbed, abraded, or jarred by vibration.

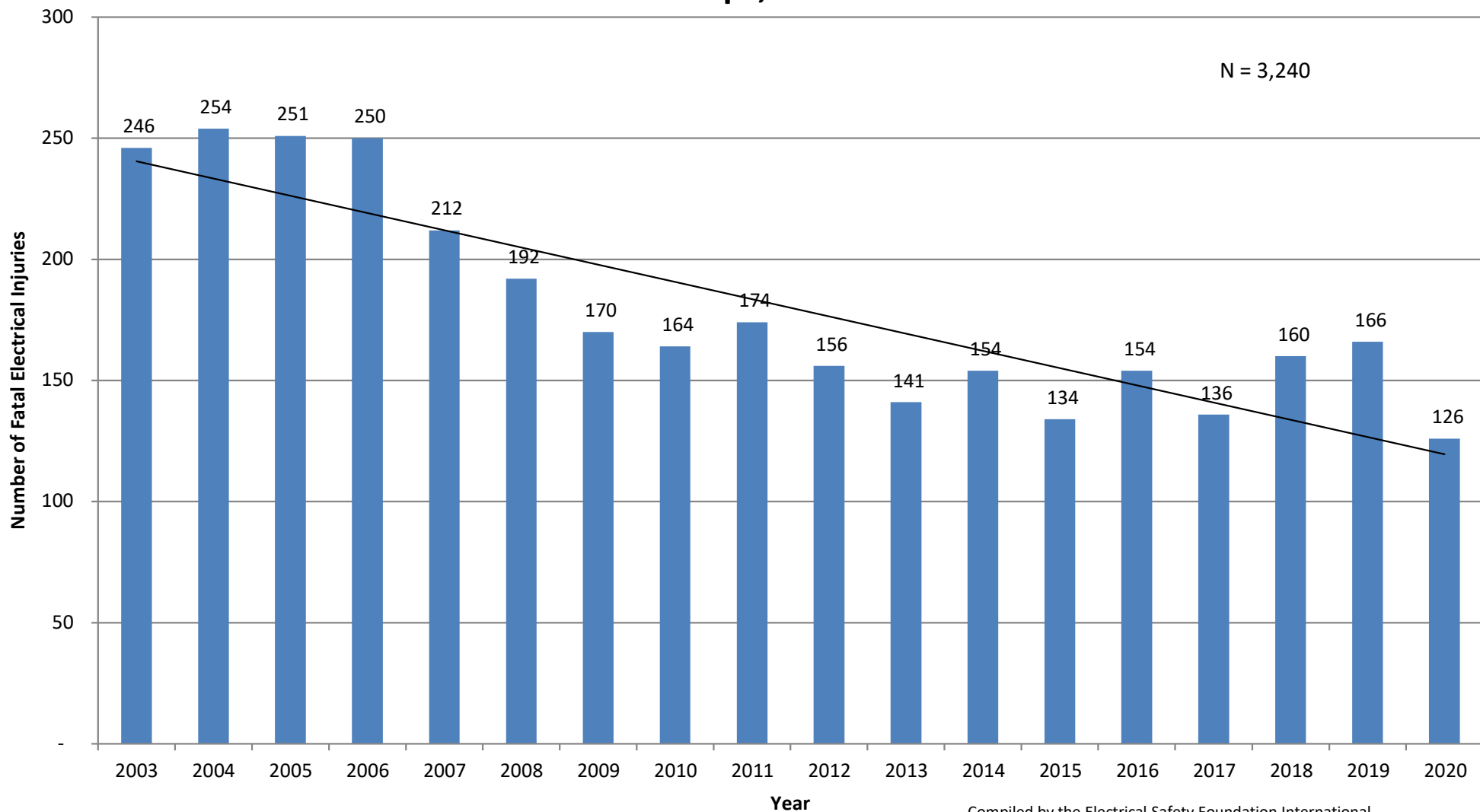
(9) Occupational Injury and Illness Classification System 2.01

NOTE: Because of rounding and data exclusion of nonclassifiable responses, data may not sum to the totals. Dashes indicate data that do not meet publication guidelines. The scientifically selected probability sample used was one of many possible samples, each of which could have produced different estimates. A measure of sampling variability for each estimate is available upon request -- please contact iifstaff@bls.gov or call (202) 691-6170. For additional information about methodology and coding structures, see the BLS Handbook of Methods chapter 9: <https://www.bls.gov/opub/hom/homch9.htm> .

SOURCE: Bureau of Labor Statistics, U.S. Department of Labor, Dec 16, 2021

Chart 01

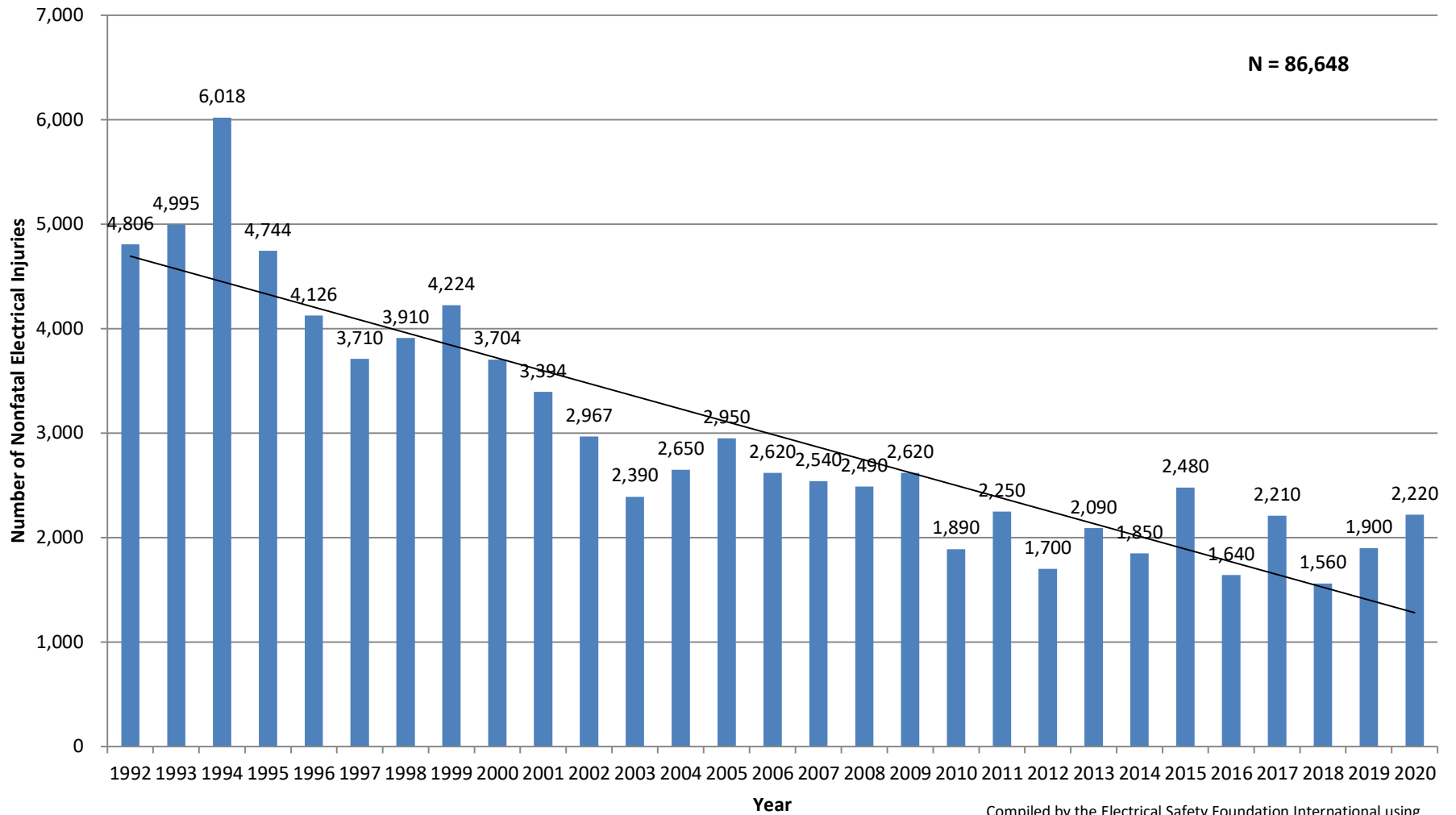
Number of Fatal Electrical Injuries, by Event Code, All Ownerships, 2003 - 2020



Compiled by the Electrical Safety Foundation International
using data from the U.S. Bureau of Labor Statistics, CFOI, 2003 -2020

Chart 02

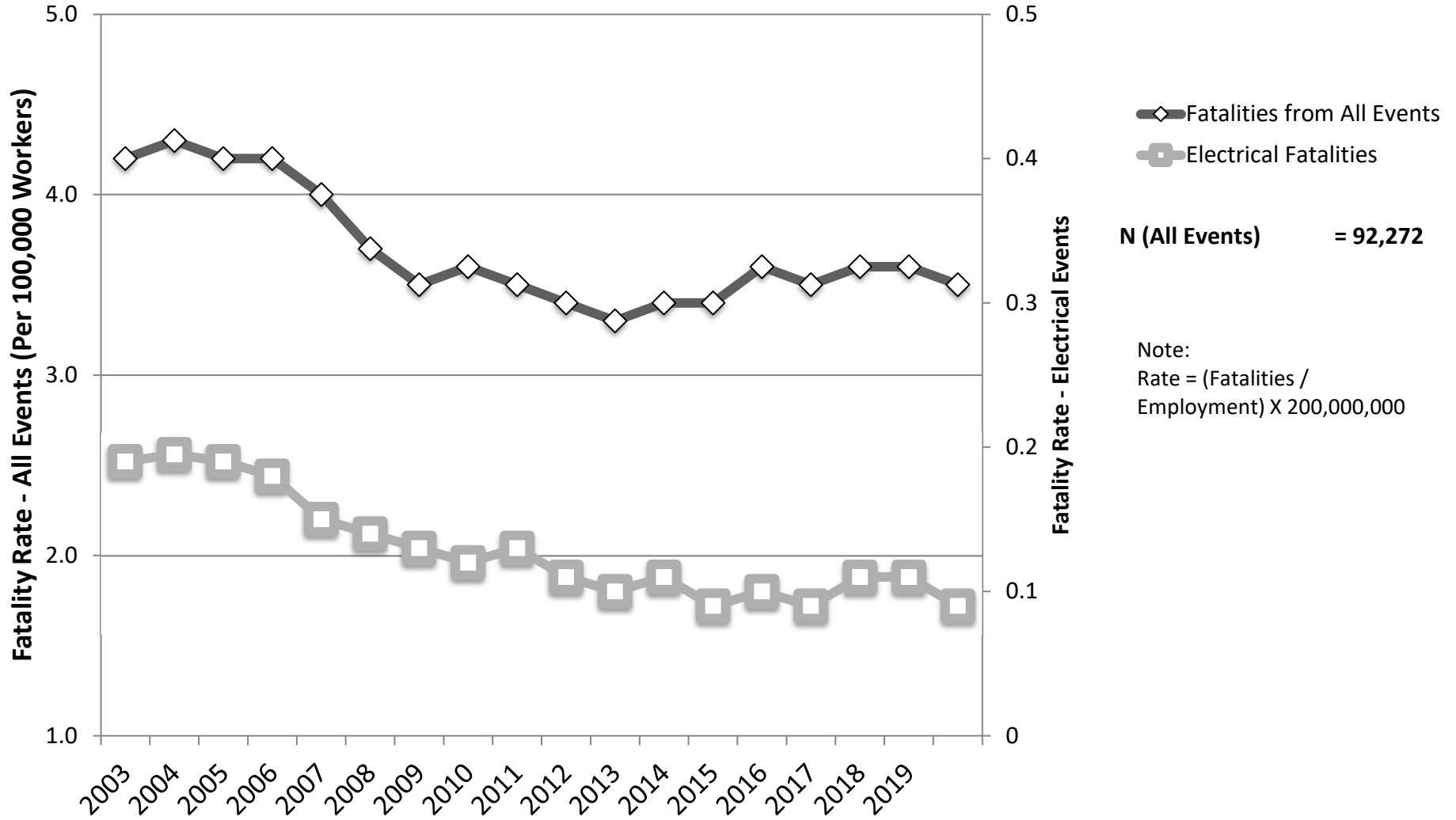
Number of Nonfatal Electrical Injury, by Event, Private Industry, 1992 - 2020



Compiled by the Electrical Safety Foundation International using data from BLS CFI, 1992 - 2020

Chart 04

Fatality Rates for All Events vs. Electrical Events, All Ownerships, 2003 - 2020



Compiled by the Electrical Safety Foundation International using data from
BLS, CFOI, 2003 - 2020

Chart 05

Rates of Nonfatal Electrical Injury Involving Days Away from Work for Selected Industries, by Event, Private Industry, 2003 - 2020

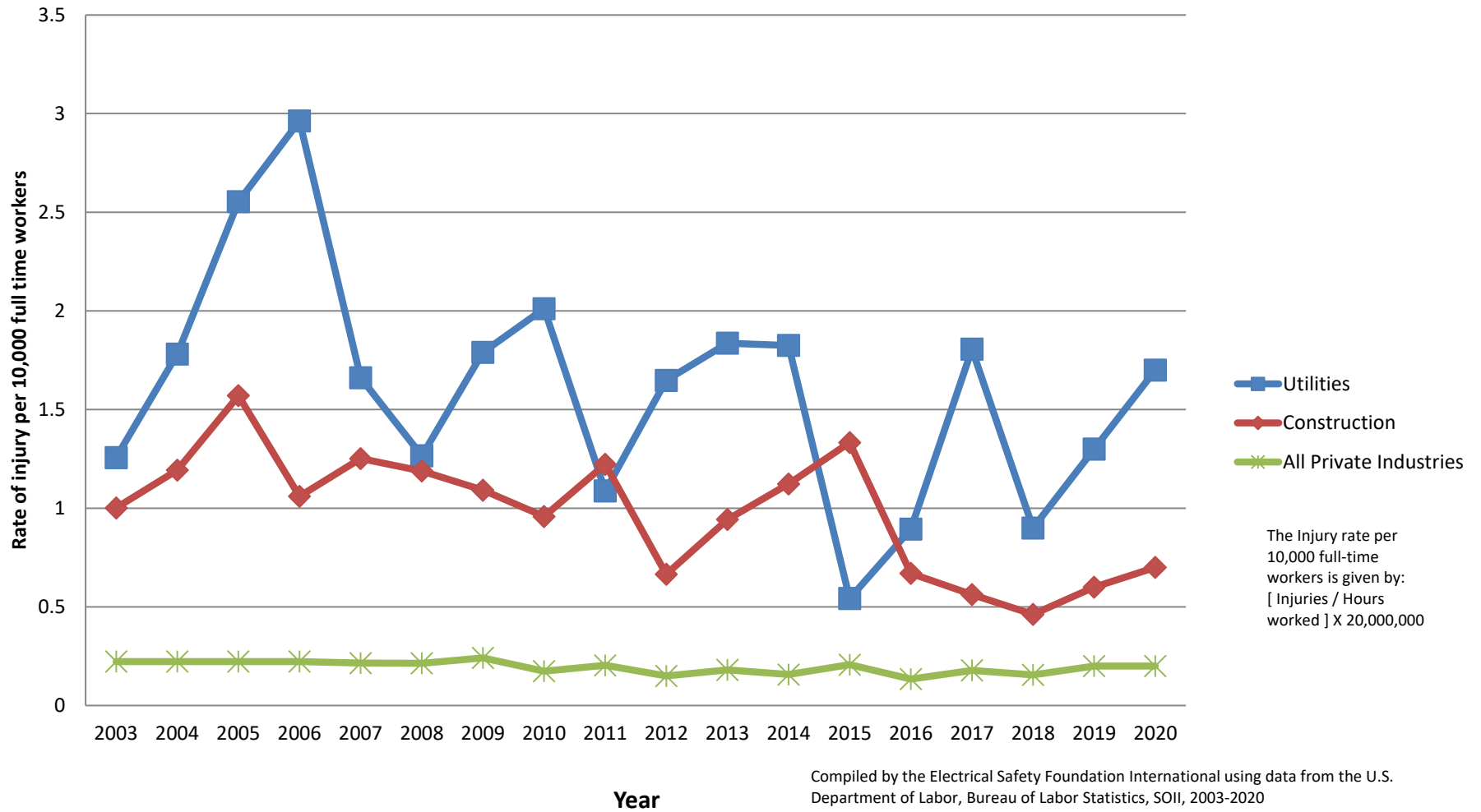
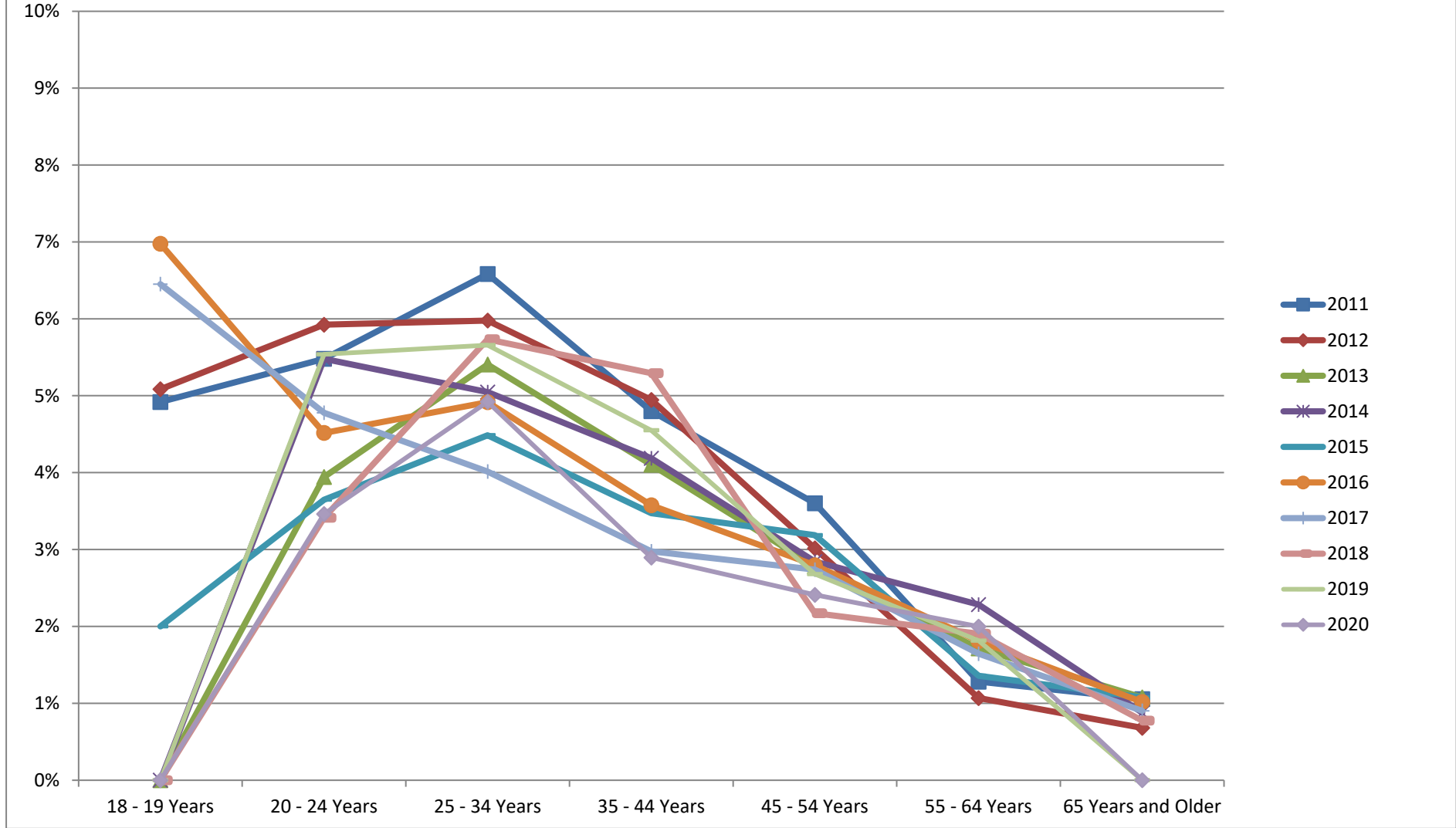


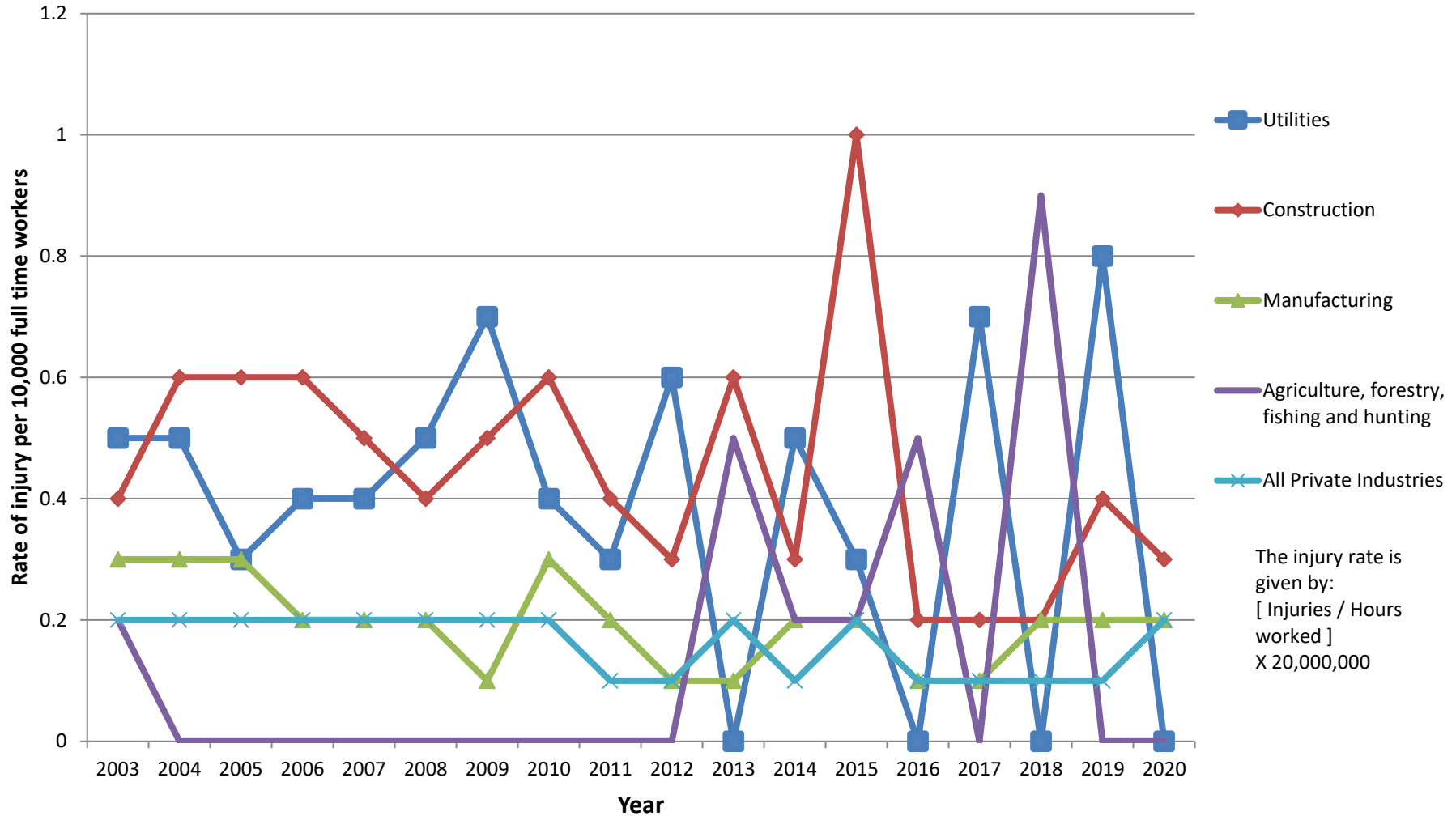
Chart 06

Electrical Fatalities by Age Group as a Percentage of Fatalities from All Events, All ownerships, 2011 - 2020



Compiled by the Electrical Safety Foundation International using data from the U.S. Department of Labor, Bureau of Labor Statistics, CFOI, 2011-2020

Rate of Nonfatal Electrical Shock Injury Involving Days Away from Work for Selected Industries, Private Industry, 2003 - 2020



Rate of Nonfatal Electrical Burn Injury Involving Days Away from Work for Selected Industries, Private Industry, 2003 - 2020

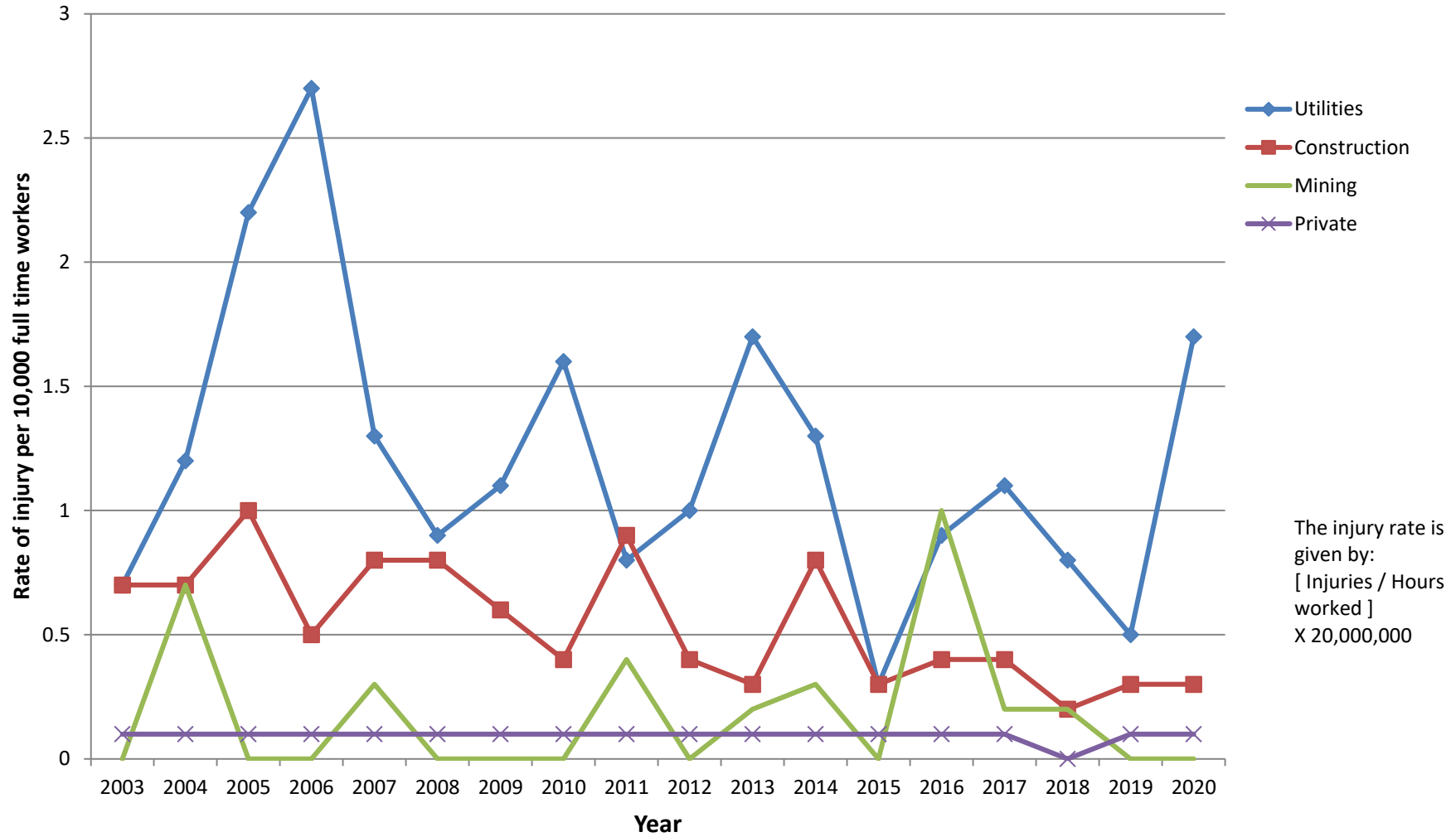
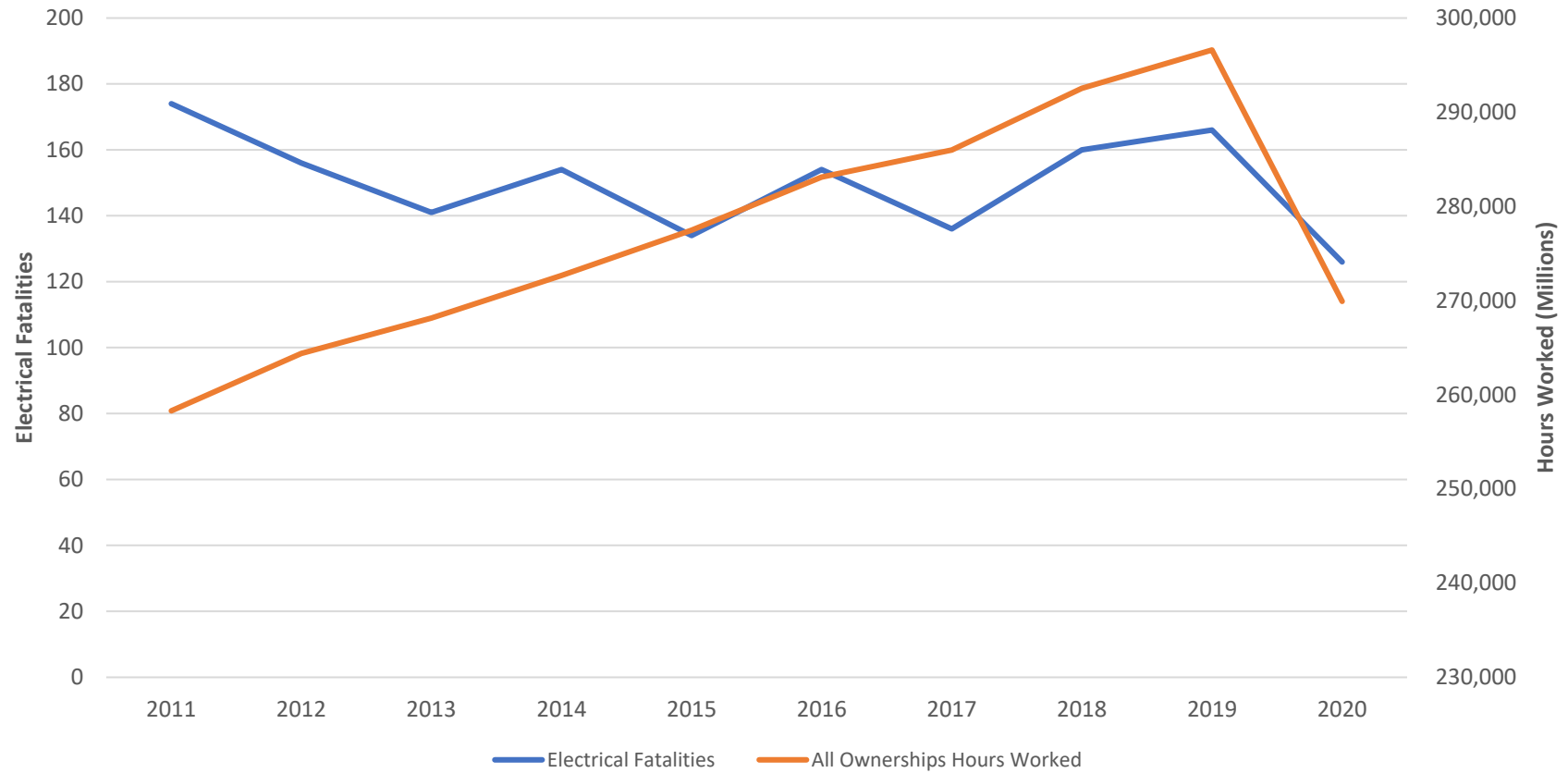


Chart 09

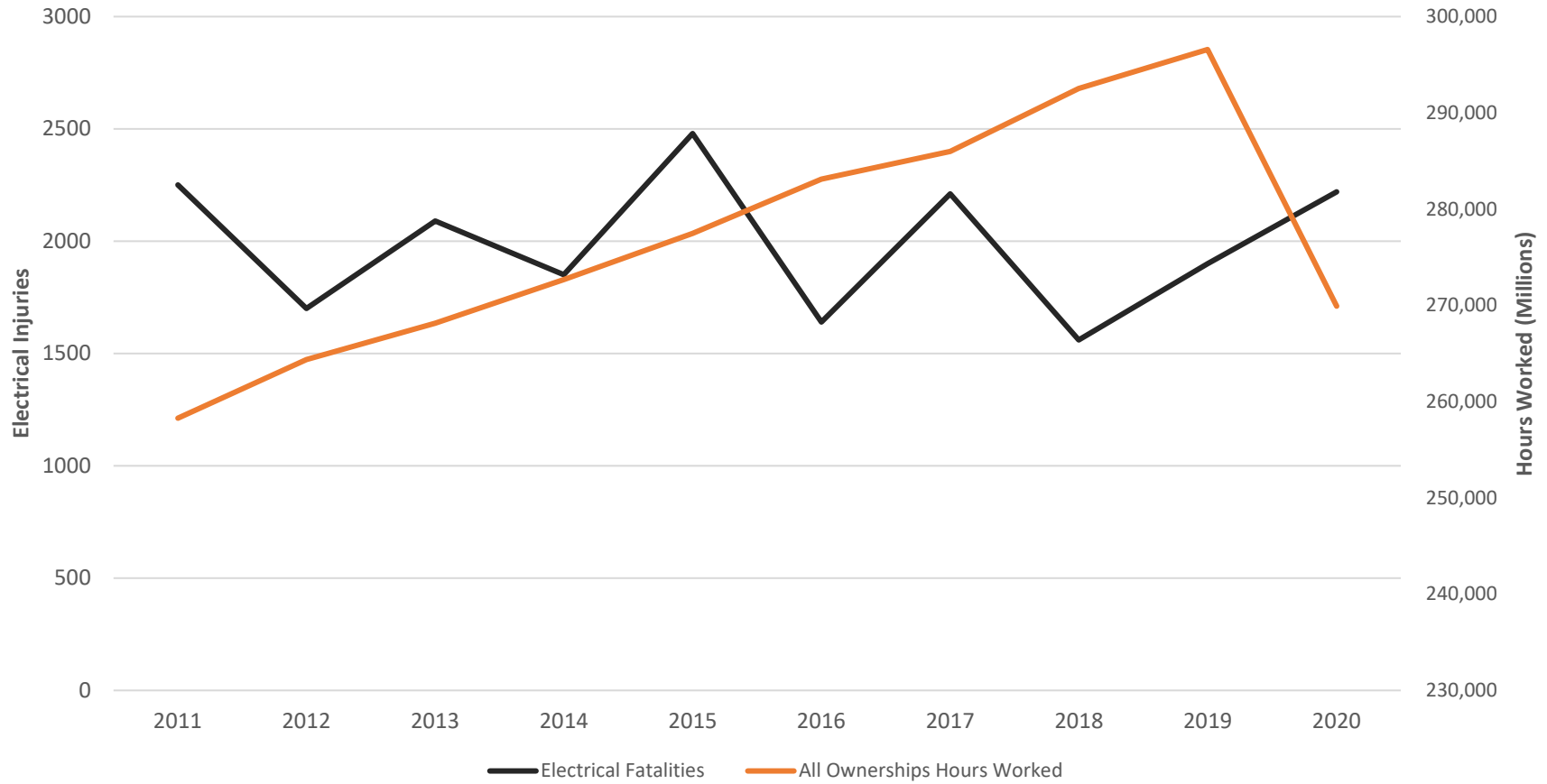
Electrical Fatalities vs. Total Hours Worked, All Ownerships, 2011 - 2020



Compiled by the Electrical Safety Foundation International using data from the U.S. Department of Labor, Bureau of Labor Statistics, SOII, 2003-2020

Chart 10

Electrical Injuries vs. Total Hours Worked, All Ownerships, 2011 - 2020



Compiled by the Electrical Safety Foundation International using data from the U.S. Department of Labor, Bureau of Labor Statistics, SOII, 2003-2020