

SURGE **PROTECTIVE** DEVICES

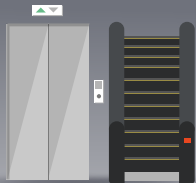
Protecting Your Business from Downtime and Data Loss

Surges can occur in **any facility** and according to the National Electrical Manufacturers Association, **80%** of all surges **originate inside facilities**.

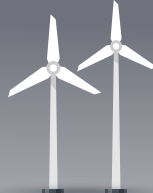
THE NATIONAL ELECTRICAL CODE REQUIRES SURGE PROTECTION IN:



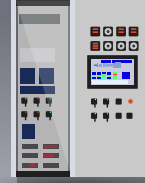
EMERGENCY
SYSTEMS



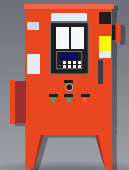
ELEVATORS &
ESCALATORS



WIND ELECTRIC
SYSTEMS



INDUSTRIAL
MACHINERY



FIRE PUMP
CONTROLLERS

TYPE OF SURGE PROTECTION

Use **Type 1, 2, and 3 SPDs** for the best level of protection.

Type 1

Permanently connected Surge Protective Device. Protects against external and internal surges. May be installed **inside or outside** the facility.



Type 2

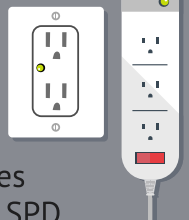
Permanently connected Surge Protective Device installed in, or next to, main panel. Protects against **internal and external** surges.



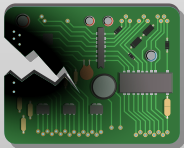
Extra Protection

Type 3

Point of use Surge Protective Device. **Provides limited protection** to devices plugged directly to SPD.



SURGE PROTECTIVE DEVICES PROTECT AGAINST:



EQUIPMENT DAMAGE



EQUIPMENT DOWNTIME



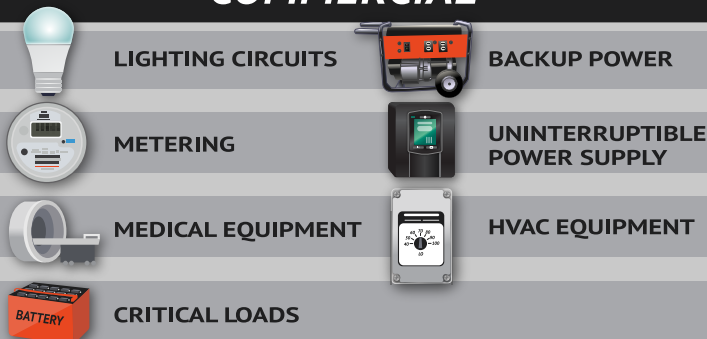
LOST REVENUE



PRODUCTIVITY LOSS

The following can be damaged by surge and should have a level of surge protection to prevent **damage, downtime, and lost revenue**.

COMMERCIAL



LIGHTING CIRCUITS

METERING

MEDICAL EQUIPMENT

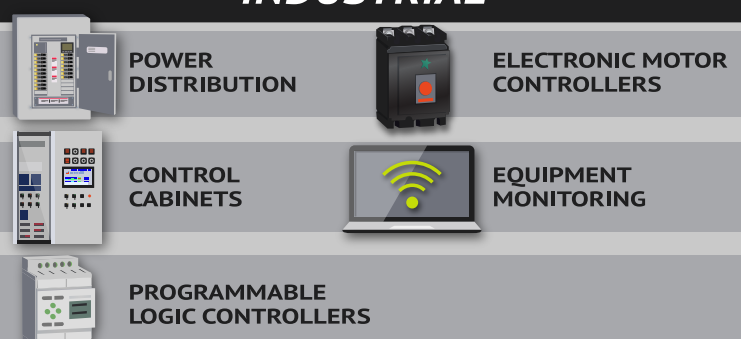
CRITICAL LOADS

BACKUP POWER

UNINTERRUPTIBLE
POWER SUPPLY

HVAC EQUIPMENT

INDUSTRIAL



POWER
DISTRIBUTION

CONTROL
CABINETS

PROGRAMMABLE
LOGIC CONTROLLERS

ELECTRONIC MOTOR
CONTROLLERS

EQUIPMENT
MONITORING

Please share this free resource to save lives