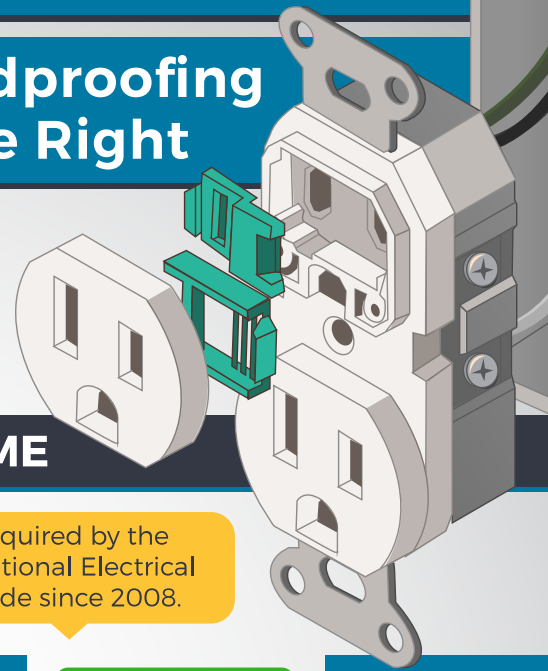


TAMPER RESISTANT RECEPTACLES

Childproofing Done Right



A study by Temple University found that **100%** of all 2-4 year olds were able to remove one type of plastic outlet cap **within 10 seconds**. Properly childproof your outlets by installing **Tamper Resistant Receptacles**.



HOW TO PROPERLY CHILDPROOF YOUR HOME

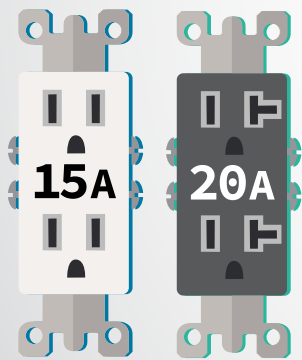
⚡ Tamper Resistant Receptacles offer a permanent solution to outlet covers.

⚡ Built in shutters prevent foreign objects from being inserted into the outlet.

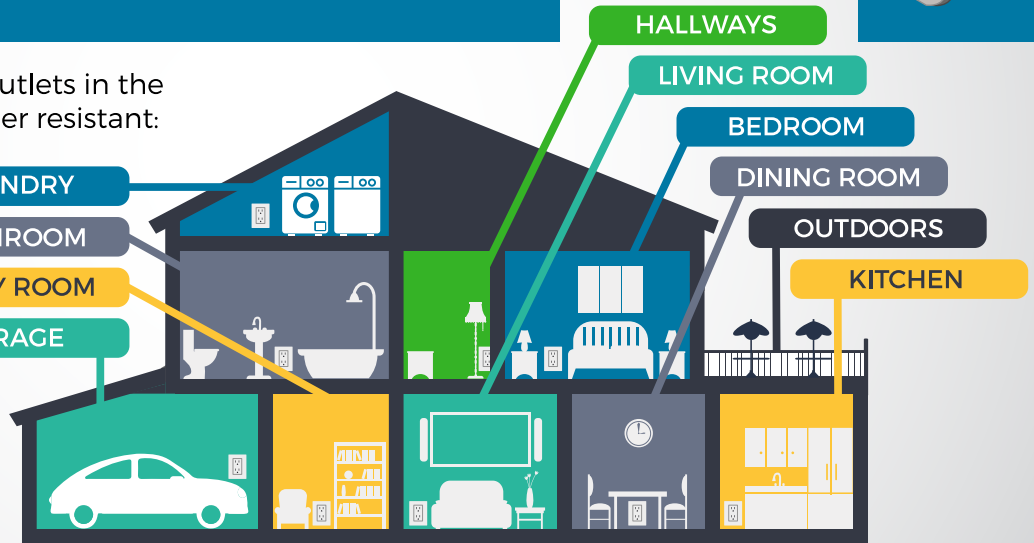
⚡ Required by the National Electrical Code since 2008.

► WHERE TO INSTALL

All **15A - 20A, 125v** and **150v** outlets in the following areas must be tamper resistant:



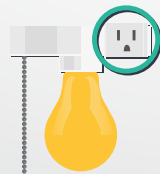
LAUNDRY
BATHROOM
FAMILY ROOM
GARAGE



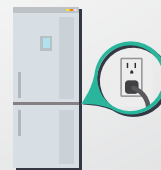
► EXCEPTIONS



Outlets located more than **5 ½ ft** above the floor.



Outlets that are part of a **luminaire**.



Outlets dedicated to **appliances that cannot be easily moved**.

► NEW IN 2017

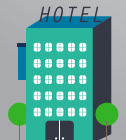
Tamper Resistant Receptacles are **required** in new and renovated:



Childcare facilities.



Preschools and **elementary education** facilities.



Hotel and **motel** guest rooms.



Gyms, skating rinks, auditoriums, and **places of waiting**.



Offices, corridors, waiting rooms, and similar rooms in **clinic, medical and dental offices,** and **outpatient facilities**.



MAY IS NATIONAL ELECTRICAL SAFETY MONTH

Please share this free resource to save lives

www.facebook.com/ESFI.org

www.twitter.com/ESFIdotorg

www.youtube.com/ESFIdotorg