

# ARC-FAULT CIRCUIT INTERRUPTERS

Protecting Your Home from Fires

**Home fires are more deadly and costly than ever.** While the number of total fires and fire injuries are decreasing, property damage and fire deaths are on the rise. Each year arc-faults, caused by worn and inadequate wiring, overburdened circuits, outdated technology, and aging electrical systems, start more than **35,000 home fires** causing over **1,130 injuries**, **500 deaths**, and **\$1.4 billion** in property damage.

## Common Causes of Arc-Faults



Damaged electrical wiring



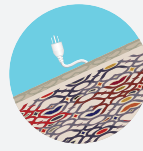
Wiring damaged by screws or nails



Wiring damaged by doors



Damaged electrical insulation



Overheated cords under carpets or rugs



Damaged or loose connections



Cords and plugs damaged by furniture



Arc-fault protection is required in:



Parlors, libraries, or dens



Rec rooms



Bedrooms



Closets



Living rooms



Family rooms



Kitchens

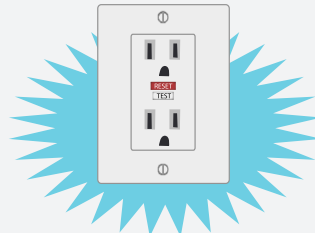


Laundry areas

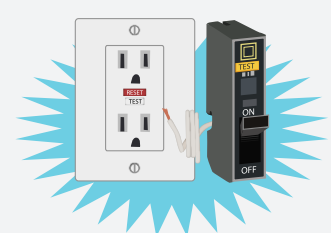
Types of arc-fault protection:



A listed combination-type AFCI circuit breaker



A listed outlet branch-circuit-type AFCI receptacle



A listed outlet branch-circuit-type AFCI receptacle in combination with a listed branch-circuit overcurrent device

Please share this free resource to save lives

AFCI circuit breakers and receptacles protect all downstream wiring and appliances from arc-faults. Receptacles should be installed at the first outlet box of a circuit.