

Table 1

<b>Total fatalities from all causes, 2003-2009</b>										
<b>Rank</b>	<b>Event or Exposure</b>	<b>Event code</b>	<b>2003</b>	<b>2004</b>	<b>2005</b>	<b>2006</b>	<b>2007</b>	<b>2008</b>	<b>2009 (P)</b>	<b>Fatalities</b>
1	Transportation, excluding water, rail, air		2,041	2,118	2,173	2,081	2,057	1,829	1,411	<b>13,710</b>
2	Assaults and Violent acts	6	902	809	792	788	864	816	788	<b>5,759</b>
3	Falls	1	696	822	770	827	847	700	617	<b>5,279</b>
4	Struck by object or equipment	02	531	602	607	589	504	520	414	<b>3,767</b>
5	Caught in or compressed by equipment or objects	03	238	269	278	283	296	302	232	<b>1,898</b>
6	Exposure to harmful substances or environments, excluding electrical		240	210	250	297	285	247	222	<b>1,751</b>
7	Contact with electric current	31	246	254	251	250	212	192	168	<b>1,573</b>
8	Aircraft	46	211	231	149	217	174	191	156	<b>1,329</b>
9	Caught in or crushed in collapsing materials	04	126	117	109	108	108	100	80	<b>748</b>
10	Water Vehicle	45	69	91	88	96	71	76	82	<b>573</b>
11	Explosions	52	75	75	65	99	75	80	59	<b>528</b>
12	Railway	44	43	50	83	65	49	34	33	<b>357</b>
	Other		157	116	119	140	115	127	78	<b>852</b>
	<b>Total Fatalities (all causes)</b>		<b>5,575</b>	<b>5,764</b>	<b>5,734</b>	<b>5,840</b>	<b>5,657</b>	<b>5,214</b>	<b>4,340</b>	<b>38,124</b>

(P) means the data are preliminary any may be revised

Compiled by the Electrical Safety Foundation International using data from the U.S. Bureau of Labor Statistics, CFOI, 2003-2009

Table 2

<b>Fatal electrical injuries for all industries, by Event, 1992–2009</b>								
<b>Year</b>	<b>Event code</b>							
	<b>3100</b>	<b>3110</b>	<b>3120</b>	<b>3130</b>	<b>3140</b>	<b>3150</b>	<b>3190</b>	<b>Total</b>
<b>1992</b>	32	60	66	140	-	15	19	<b>332</b>
<b>1993</b>	32	44	100	115	5	16	12	<b>325</b>
<b>1994</b>	23	63	98	132	6	15	11	<b>348</b>
<b>1995</b>	32	55	94	139	5	17	6	<b>348</b>
<b>1996</b>	22	46	70	116	5	18	-	<b>277</b>
<b>1997</b>	14	41	71	138	5	22	7	<b>298</b>
<b>1998</b>	10	51	84	153	9	21	6	<b>334</b>
<b>1999</b>	5	51	76	125	-	13	6	<b>276</b>
<b>2000</b>	5	42	67	128	-	7	5	<b>254</b>
<b>2001</b>	9	47	78	124	-	15	8	<b>281</b>
<b>2002</b>	7	42	90	122	-	16	8	<b>285</b>
<b>2003</b>	4	46	67	100	-	8	3	<b>246</b>
<b>2004</b>	7	37	59	119	5	11	5	<b>254</b>
<b>2005</b>	3	45	73	107	-	9	-	<b>251</b>
<b>2006</b>	-	46	75	106	-	8	-	<b>250</b>
<b>2007</b>	5	43	59	94	-	10	-	<b>212</b>
<b>2008</b>	-	32	45	102	3	8	-	<b>192</b>
<b>2009 (P)</b>	5	33	60	63	-	4	-	<b>168</b>
<b>Total</b>	<b>215</b>	<b>824</b>	<b>1,332</b>	<b>2,123</b>	<b>43</b>	<b>233</b>	<b>96</b>	<b>4,931</b>
<b>Pct.</b>	<b>4</b>	<b>17</b>	<b>27</b>	<b>43</b>	<b>1</b>	<b>5</b>	<b>2</b>	<b>--</b>

Dashes [ - ] indicate no data or data do not meet publication criteria

Totals may be understated due to missing data

(P) means the data are preliminary any may be revised

Event code descriptions are as follows:

3100—Contact with electric current, unspecified

3110—Contact with electric current of machine, tool, appliance, or light fixture

3120—Contact with wiring, transformers, or other electrical components

3130—Contact with overhead power lines

3140—Contact with underground, buried power lines

3150—Struck by lightning

3190—Contact with electric current, n.e.c.

Total—All electrical events

Rows, columns may not sum to total.

Compiled by the Electrical Safety Foundation International using data from the U.S. Bureau of Labor Statistics, CFOI, 1992-2009

Table 3

<b>Number of electrical fatalities, Private Industry, 2003-2009</b>									
	<b>2003</b>	<b>2004</b>	<b>2005</b>	<b>2006</b>	<b>2007</b>	<b>2008</b>	<b>2009 (P)</b>	<b>Total</b>	<b>Pct.</b>
<b>Private Industry</b>									
<b>Natural resources and mining</b>	16	20	27	27	24	13	9	<b>136</b>	<b>9</b>
<b>Construction</b>	132	122	107	126	108	89	88	<b>772</b>	<b>52</b>
<b>Manufacturing</b>	22	22	17	14	17	19	15	<b>126</b>	<b>9</b>
<b>Trade, transportation, and utilities</b>	17	30	29	32	19	19	18	<b>164</b>	<b>11</b>
<b>Information</b>	3	6	4	3	-	-	-	<b>16</b>	<b>1</b>
<b>Financial activities</b>	5	-	-	5	3	-	-	<b>13</b>	<b>1</b>
<b>Professional and business services</b>	23	29	39	21	25	27	24	<b>188</b>	<b>13</b>
<b>Education and health services</b>	-	-	-	-	-	-	-	<b>-</b>	<b>-</b>
<b>Leisure and hospitality</b>	4	3	6	5	-	3	-	<b>21</b>	<b>1</b>
<b>Other services</b>	7	6	10	6	5	5	4	<b>43</b>	<b>3</b>
<b>Total</b>	<b>229</b>	<b>238</b>	<b>239</b>	<b>239</b>	<b>201</b>	<b>175</b>	<b>168</b>	<b>1,479</b>	<b>100</b>

## NOTES:

(P) means the data are preliminary any may be revised

Dashes [ - ] indicate no data or data that do not meet publication criteria.

Totals for major categories may include subcategories not shown separately.

Compiled by the Electrical Safety Foundation International using data from the U.S. Department of Labor, Bureau of Labor Statistics, in cooperation with State, New York City, District of Columbia, and Federal agencies, Census of Fatal Occupational Injuries

Table 4

<b>Nonfatal electrical injuries involving days away from work, Private Industry, by Event, 1992-2009</b>								
<b>Year</b>	<b>Event code</b>							
	<b>3100</b>	<b>3110</b>	<b>3120</b>	<b>3130</b>	<b>3140</b>	<b>3150</b>	<b>3190</b>	<b>Total</b>
<b>1992</b>	507	1,795	1,614	174	36	170	509	<b>4,806</b>
<b>1993</b>	453	2,111	1,531	133	74	71	620	<b>4,995</b>
<b>1994</b>	506	2,966	1,607	273	38	214	415	<b>6,018</b>
<b>1995</b>	769	1,506	1,571	155	47	172	522	<b>4,744</b>
<b>1996</b>	405	1,037	1,751	92	153	223	465	<b>4,126</b>
<b>1997</b>	365	1,413	1,390	79	52	-	386	<b>3,710</b>
<b>1998</b>	506	1,361	1,318	314	40	50	322	<b>3,910</b>
<b>1999</b>	321	1,588	1,261	194	92	70	700	<b>4,224</b>
<b>2000</b>	291	1,265	1,428	108	121	128	364	<b>3,704</b>
<b>2001</b>	327	1,124	1,392	77	100	135	238	<b>3,394</b>
<b>2002</b>	342	772	1,077	66	-	65	634	<b>2,967</b>
<b>2003</b>	200	970	900	80	20	60	170	<b>2,390</b>
<b>2004</b>	160	1,110	900	40	-	100	320	<b>2,650</b>
<b>2005</b>	310	910	1,250	60	60	70	280	<b>2,950</b>
<b>2006</b>	240	840	1,010	30	-	60	430	<b>2,620</b>
<b>2007</b>	490	810	870	40	-	120	200	<b>2,540</b>
<b>2008</b>	410	830	750	40	150	60	250	<b>2,490</b>
<b>2009</b>	190	1,330	730	20	20	80	240	<b>2,620</b>
<b>Total</b>	<b>6,792</b>	<b>23,738</b>	<b>22,350</b>	<b>1,975</b>	<b>1,003</b>	<b>1,848</b>	<b>7,065</b>	<b>64,858</b>
<b>Pct.</b>	<b>10</b>	<b>37</b>	<b>34</b>	<b>3</b>	<b>2</b>	<b>3</b>	<b>11</b>	<b>---</b>

Dashes [ - ] indicate no data or data do not meet publication criteria

Totals may be understated due to missing data

Rows, columns may not sum to total.

Event code descriptions are as follows:

3100—Contact with electric current, unspecified

3110—Contact with electric current of machine, tool, appliance, or light fixture

3120—Contact with wiring, transformers, or other electrical components

3130—Contact with overhead power lines

3140—Contact with underground, buried power lines

3150—Struck by lightning

3190—Contact with electric current, n.e.c.

Total—All electrical events

Table 5

<b>Median number of days away from work for nonfatal electrical injuries, by Event, 1992-2009</b>								
<b>Year</b>	<b>Event code</b>							
	<b>3100</b>	<b>3110</b>	<b>3120</b>	<b>3130</b>	<b>3140</b>	<b>3150</b>	<b>3190</b>	<b>Total</b>
<b>1992</b>	13	3	7	33	21	6	2	5
<b>1993</b>	10	3	8	8	2	3	5	4
<b>1994</b>	4	5	4	30	15	14	6	5
<b>1995</b>	3	2	5	13	10	2	2	3
<b>1996</b>	3	4	22	5	2	3	12	7
<b>1997</b>	1	4	4	60	14	-	8	4
<b>1998</b>	10	4	6	14	137	3	2	5
<b>1999</b>	2	5	10	142	1	8	6	5
<b>2000</b>	5	4	5	15	9	10	43	5
<b>2001</b>	8	2	3	6	56	4	6	3
<b>2002</b>	10	2	4	66	-	3	4	4
<b>2003</b>	7	4	7	8	1	2	3	5
<b>2004</b>	18	6	10	68	-	145	8	10
<b>2005</b>	3	4	8	14	4	7	5	5
<b>2006</b>	7	3	5	21	-	2	8	5
<b>2007</b>	18	3	6	1	-	5	2	4
<b>2008</b>	1	3	6	13	5	20	3	3
<b>2009</b>	5	5	4	3	4	83	2	4

Dashes [ - ] indicate no data or data do not meet publication criteria

Totals may be understated due to missing data

Rows, columns may not sum to total.

Event code descriptions are as follows:

3100—Contact with electric current, unspecified

3110—Contact with electric current of machine, tool, appliance, or light fixture

3120—Contact with wiring, transformers, or other electrical components

3130—Contact with overhead power lines

3140—Contact with underground, buried power lines

3150—Struck by lightning

3190—Contact with electric current, n.e.c.

Total—All electrical events

Table 6

<b>Occupational groups with the most fatal electrical injuries, 2003-2009</b>		
<b>Occupational Groups</b> Selected Occupations		<b>Total</b>
<b>Construction Trades Workers</b> Electricians Construction Laborers Roofers Painters, Construction and Maintenance Carpenters	272 134 37 35 32	<b>586</b>
<b>Installation, Maintenance, and Repair Occupations</b> Electrical Power-Line Installers and Repairers Industrial Machinery Installation, Repair, and Maintenance Workers Heating, Air Conditioning, and Refrigeration Mechanics and Insulators Telecommunications Line Installers and Repairers	122 63 49 20	<b>331</b>
<b>Grounds Maintenance Workers</b> Tree Trimmers and Pruners Landscaping and Groundskeeping Workers	71 29	<b>103</b>
<b>Transportation and Material Moving Occupations</b> Driver/Sales Workers and Truck Drivers Material Moving Workers	45 44	<b>99</b>
<b>Other Management Occupations</b>		<b>65</b>
<b>Agricultural Workers</b>		<b>38</b>
<b>Subtotal</b>		<b>1,260</b>
<b>Percent of total electrical fatalities</b>	<b>61%</b>	<b>80%</b>

Compiled by the Electrical Safety Foundation International using data from the U.S. Department of Labor, Bureau of Labor Statistics, Census of Fatal Occupational Injuries, 2003-2009

Table 7 (Page 1 of 4)

Fatal electrical injuries by selected worker characteristics, all U.S., all ownerships, 2003 - 2009								
Characteristic	All events (8)	Contact with electric current (code 31XXXX)						
	2009	2003	2004	2005	2006	2007	2008	2009
<b>Total:</b>	(P) 4340	246	254	251	250	212	192	(P) 168
<b>Employee status:</b>								
Wage and salary workers (6)	(P) 3335	206	215	198	202	181	171	(P) 138
Self-employed (7)	(P) 1005	40	39	53	48	31	21	(P) 30
<b>Gender:</b>								
Men	(P) 4021	245	252	247	246	210	189	(P) 168
Women	(P) 319	-	-	4	4	-	3	-
<b>Age:</b>								
Under 16	(P) 13	-	-	-	-	-	-	-
16 to 17	(P) 14	-	-	-	3	-	-	-
18 to 19	(P) 55	6	6	3	5	6	3	-
20 to 24	(P) 261	32	39	27	33	31	21	(P) 21
25 to 34	(P) 681	66	74	68	68	59	49	(P) 50
35 to 44	(P) 872	70	60	67	60	47	52	(P) 44
45 to 54	(P) 1113	44	47	61	54	44	47	(P) 32
55 to 64	(P) 806	20	26	18	19	17	16	(P) 11
65 years and over	(P) 521	6	-	4	8	6	3	(P) 8
<b>Race or ethnic origin (1) :</b>								
White non-Hispanic	(P) 3059	182	191	168	180	141	140	(P) 121
Black non-Hispanic	(P) 407	14	14	15	18	11	11	(P) 11
Hispanic	(P) 668	45	48	57	50	57	36	(P) 30
American Indian Aleut Eskimo	(P) 32	-	-	-	-	-	3	-
Asian	(P) 122	-	-	5	-	-	-	-
Pacific Islander	(P) 7	-	-	-	-	-	-	-
Multiple races	(P) 7	-	-	-	-	-	-	-
Other or not reported	(P) 38	-	-	-	-	-	-	-
<b>Primary source (2) (8) :</b>								
Vehicles	(P) 1754	10	16	12	14	8	13	(P) 5
Highway vehicles	(P) 1200	7	13	9	11	6	11	(P) 4
Automobiles	(P) 230	-	-	-	-	-	-	-
Trucks	(P) 848	7	12	9	11	6	11	(P) 4
Plant and industrial powered vehicles	(P) 227	3	-	-	-	-	-	-
tractors	(P) 57	3	-	-	-	-	-	-
Forklifts	(P) 167	-	-	-	-	-	-	-
Tractors	(P) 682	12	6	10	8	9	12	(P) 3
Structures and surfaces	(P) 584	-	-	-	-	-	-	-
Floors walkways ground surfaces	(P) 328	63	48	50	44	35	25	(P) 28
Machinery	(P) 61	4	-	4	4	-	-	-
Agriculture and garden machinery	(P) 129	10	6	5	6	-	-	-
Construction logging and mining machinery	(P) 71	21	23	19	17	12	18	(P) 7
Material handling machinery	(P) 306	104	123	116	112	115	81	(P) 93
Parts and materials	(P) 111	92	108	103	99	100	76	(P) 85
Machine tool and electric parts	(P) 195	3	3	4	5	4	3	-
Persons plants animals and minerals	(P) 25	-	-	-	-	-	-	-
Persons -other than injured worker	(P) 7	-	-	-	-	-	-	-
Robber	(P) 3	-	-	-	-	-	-	-
Co-worker former co-worker	(P) 88	-	3	4	4	4	3	-
Trees logs	(P) 129	-	-	-	-	-	-	-
Chemicals and chemical products	(P) 92	30	37	41	45	22	35	(P) 16
Tools instruments and equipment	(P) 77	4	-	-	-	-	-	-
Containers	(P) 777	20	21	18	22	19	23	(P) 19
Other	(P) 548	-	-	-	-	-	-	-
Bullets and pellets	(P) 62	-	-	-	-	-	-	-
Fire flame smoke	(P) 62	-	-	-	-	-	-	-

Compiled by the Electrical Safety Foundation International using data from the U.S. Department of Labor, Bureau of Labor Statistics

Table 7 (page 2 of 4)

Fatal electrical injuries by selected worker characteristics, all U.S., all ownerships, 2003 - 2009								
Characteristic	All events (8)	Contact with electric current (code 31XXXX)						
		2009	2003	2004	2005	2006	2007	2008
<b>Secondary source (3) (8) :</b>								
Vehicles	(P) 670	-	3	3	-	-	-	-
Highway vehicles	(P) 548	-	3	-	-	-	-	-
Plant and industrial powered vehicles tractors	(P) 54	-	-	-	-	-	-	-
Structures and surfaces	(P) 528	-	-	3	5	-	-	-
Floors walkways ground surfaces	(P) 102	-	-	-	-	-	-	-
Structures	(P) 258	-	-	-	4	-	-	-
Machinery	(P) 202	11	9	9	13	14	14	(P) 5
Parts and materials	(P) 152	97	105	105	102	70	79	(P) 50
Machine tool and electric parts	(P) 73	95	105	105	99	70	78	(P) 50
Persons plants animals and minerals	(P) 703	-	-	3	-	-	-	-
Persons -other than injured worker	(P) 502	-	-	-	-	-	-	-
Robber	(P) 198	-	-	-	-	-	-	-
Co-worker former co-worker	(P) 68	-	-	-	-	-	-	-
Trees logs	(P) 162	-	-	-	-	-	-	-
Chemicals and chemical products	(P) 46	-	-	-	-	-	-	-
Tools instruments and equipment	(P) 195	4	4	-	3	-	-	(P) 7
Containers	(P) 78	-	-	-	-	-	-	-
Other	(P) 162	10	9	6	5	6	5	-
Liquids (including water)	(P) 30	7	3	3	-	5	-	-
No secondary source	(P) 1604	121	122	121	121	121	91	(P) 101
<b>Nature (8) :</b>								
Intracranial injuries	(P) 695	-	-	-	-	-	-	-
Other traumatic injuries	(P) 1239	245	249	250	247	212	187	(P) 166
Internal injuries	(P) 492	-	-	-	-	-	-	-
Asphyxiations suffocations	(P) 270	-	-	-	-	-	-	-
Drownings	(P) 148	-	-	-	-	-	-	-
Electrocutions	(P) 167	245	249	250	247	212	187	(P) 166
Poisonings toxic effects	(P) 150	-	-	-	-	-	-	-
Open wounds	(P) 637	-	-	-	-	-	-	-
Gunshot wounds	(P) 548	-	-	-	-	-	-	-
Burns (heat chemical etc.)	(P) 74	-	4	-	3	-	4	-
Multiple traumatic injuries	(P) 1488	-	-	-	-	-	-	-
Intracranial injuries and injuries to internal organs	(P) 247	-	-	-	-	-	-	-
<b>Part of body (8) :</b>								
Head	(P) 918	-	-	-	-	-	-	-
Trunk	(P) 786	-	-	-	-	-	-	-
Chest	(P) 378	-	-	-	-	-	-	-
Back	(P) 43	-	-	-	-	-	-	-
Neck	(P) 127	-	-	-	-	-	-	-
Lower extremities	(P) 71	-	-	-	-	-	-	-
Upper extremities	(P) 8	-	-	-	-	-	-	-
Body systems	(P) 704	245	249	250	247	212	187	(P) 166
Multiple	(P) 1718	-	5	-	3	-	5	-
<b>Worker activity:</b>								
Vehicular and transportation operations	(P) 1722	4	9	5	8	7	9	(P) 4
Using or operating tools machinery	(P) 349	51	45	61	47	38	40	(P) 26
Constructing repairing cleaning	(P) 930	161	165	149	171	143	117	(P) 117
Protective service activities	(P) 137	-	-	-	-	-	-	-
Materials handling operations	(P) 239	16	17	23	13	14	15	(P) 12
Physical activities	(P) 271	9	10	8	8	5	5	(P) 5
Other activities	(P) 457	-	-	3	-	-	-	-
Tending a retail establishment	(P) 205	-	-	-	-	-	-	-
Not reported	(P) 235	-	5	-	-	3	-	-

Compiled by the Electrical Safety Foundation International using data from the U.S. Department of Labor, Bureau of Labor Statistics



Table 7 (Page 3 of 4)

Fatal electrical injuries by selected worker characteristics, all U.S., all ownerships, 2003 - 2009								
Characteristic	All events (8)	Contact with electric current (code 31XXXX)						
	2009	2003	2004	2005	2006	2007	2008	2009
<b>Location:</b>								
Private residence	(P) 443	70	57	64	72	57	40	(P) 41
Farm	(P) 415	15	19	19	21	15	11	(P) 4
Mine quarry	(P) 34	5	5	4	5	-	3	-
Industrial place and premises	(P) 922	82	85	88	73	60	57	(P) 60
Place for recreation or sports	(P) 72	6	5	7	4	5	7	-
Street and highway	(P) 1249	34	39	28	25	26	35	(P) 19
Public building	(P) 575	21	23	30	34	29	21	(P) 28
Residential institutions	(P) 30	-	-	-	-	-	-	-
Other or not reported	(P) 600	12	19	10	16	18	17	(P) 15
<b>Occupation (9) :</b>								
Management occupations	(P) 514	17	13	14	9	8	6	(P) 5
Business and financial operations occupations	(P) 24	-	-	-	-	-	-	-
Computer and mathematical occupations	(P) 6	-	-	-	-	-	-	-
Architecture and Engineering occupations	(P) 41	-	6	4	3	3	-	(P) 3
Life physical and social science occupations	(P) 16	-	-	-	-	-	-	-
Community and social services occupations	(P) 29	-	-	3	-	-	-	-
Legal occupations	(P) 12	-	-	-	-	-	-	-
Education training and library occupations	(P) 21	-	-	-	-	-	-	-
Arts design entertainment sports and media occupations	(P) 41	-	-	-	-	-	-	-
Healthcare practitioners and technical occupations	(P) 54	-	-	-	-	-	-	-
Healthcare support occupations	(P) 24	-	-	-	-	-	-	-
Protective service occupations	(P) 243	-	-	-	-	-	-	-
Food preparation and serving related occupations	(P) 55	-	-	-	-	-	-	-
Building and grounds cleaning and maintenance occupations	(P) 248	18	24	22	18	20	18	(P) 14
Personal care and service occupations	(P) 42	-	-	-	-	-	-	-
Sales and related occupations	(P) 269	4	-	-	-	-	-	-
Office and administrative support occupations	(P) 86	-	-	-	-	-	-	-
Farming fishing and forestry occupations	(P) 229	3	8	10	10	10	4	(P) 3
Construction and extraction occupations	(P) 818	104	105	100	133	109	85	(P) 85
Installation maintenance and repair occupations	(P) 317	62	47	63	47	38	43	(P) 31
Production occupations	(P) 191	13	13	9	9	10	14	(P) 13
Transportation and material moving occupations	(P) 988	16	28	12	13	9	12	(P) 9
Military specific occupations (5)	(P) 69	-	-	-	-	-	-	-
<b>Private industry (10) :</b>								
Goods producing	(P) 1772	170	164	151	167	149	121	(P) 112
Natural resources and mining (4)	(P) 652	16	20	27	27	24	13	(P) 9
Construction	(P) 816	132	122	107	126	108	89	(P) 88
Manufacturing	(P) 304	22	22	17	14	17	19	(P) 15
Service providing	(P) 2118	60	79	90	72	56	60	(P) 49
Trade transportation and utilities	(P) 1073	17	30	29	32	19	19	(P) 18
Information	(P) 32	3	6	4	3	-	-	-
Financial activities	(P) 101	5	-	-	5	3	-	-
Professional and business services	(P) 394	23	29	39	21	25	27	(P) 24
Education and health services	(P) 136	-	-	-	-	-	-	-
Leisure and hospitality	(P) 216	4	3	6	5	-	3	-
Other services	(P) 166	7	6	10	6	5	5	(P) 4
<b>Government (11)</b>								
Federal	(P) 116	4	-	-	3	-	-	-
State	(P) 75	-	-	-	-	-	3	-
Local	(P) 256	10	9	7	7	5	6	(P) 6

Compiled by the Electrical Safety Foundation International using data from the U.S. Department of Labor, Bureau of Labor Statistics

**Fatal electrical injuries by selected worker characteristics, all U.S., all ownerships, 2003 - 2009**

Footnotes

(1) Persons identified as Hispanic or Latino may be of any race. The race categories shown exclude data for Hispanics and Latinos.

(2) The primary source of injury identifies the object substance or exposure that directly produced or inflicted the injury. For most transportation incidents the primary source identifies the vehicle in which the deceased was an occupant. For most falls the primary source identifies the surface or object contacted.

(3) The secondary source of injury if any identifies the object substance or person that generated the source of injury or that contributed to the event or exposure. For vehicle collisions the deceased's vehicle is the primary source and the other object (truck road divider etc.) is the secondary source. For most homicides the "bullet" is the primary source and the "perpetrator" is the secondary source. For most falls the secondary source identifies the equipment or surface from which the worker fell.

(4) Mining includes fatalities at all establishments categorized as Mining (Sector 21) in the North American Industry Classification System 2002 including establishments not governed by the Mine Safety and Health Administration (MSHA) rules and reporting such as those in Oil and Gas Extraction.

(5) Military specific occupations include fatalities to persons identified as resident armed forces regardless of individual occupation listed.

(6) May include volunteers and workers receiving other types of compensation.

(7) Includes self-employed workers owners of unincorporated businesses and farms members of partnerships paid and unpaid family workers and may include owners of incorporated businesses.

(8) Based on the 1992 BLS Occupational Injury and Illness Classification Manual.

(9) Based on the 2000 Standard Occupational Classification System.

(10) Industry data from 2003 to 2008 are classified using the 2002 North American Industry Classification System (NAICS). Industry data after 2008 are classified using the 2007 NAICS.

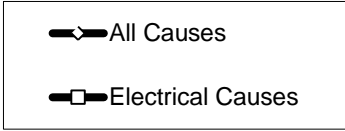
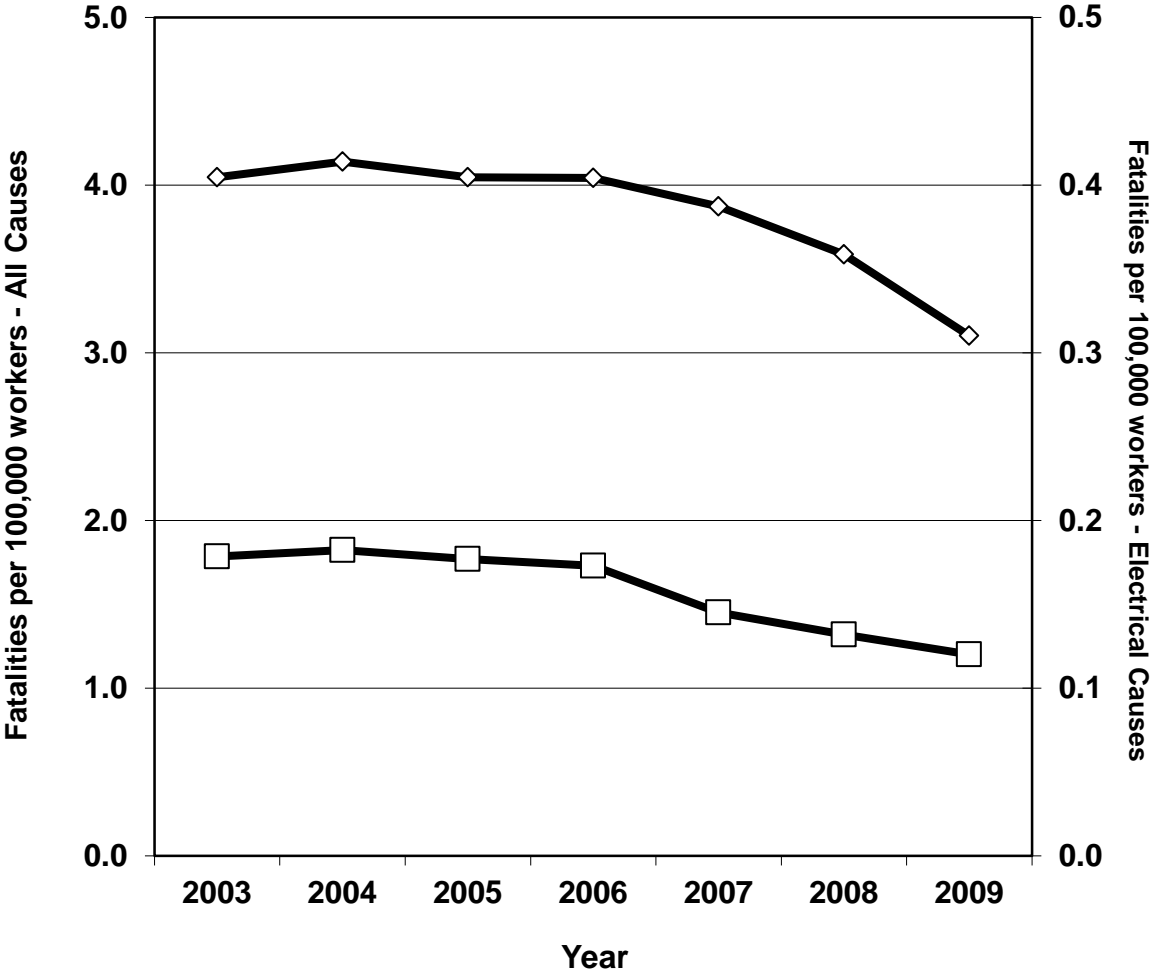
(11) Includes fatalities to workers employed by governmental organizations regardless of industry.

(P) Preliminary

NOTE: Dashes indicate no data or data that do not meet publication criteria. Totals for major categories may include subcategories not shown separately. Data for all years are final unless footnoted by "P" for preliminary data.

SOURCE: U.S. Department of Labor Bureau of Labor Statistics in cooperation with State New York City District of Columbia and Federal agencies Census of Fatal Occupational Injuries Dec 7 2010

### Fatality Rates for All Causes vs. Electrical Causes, 2003-2009

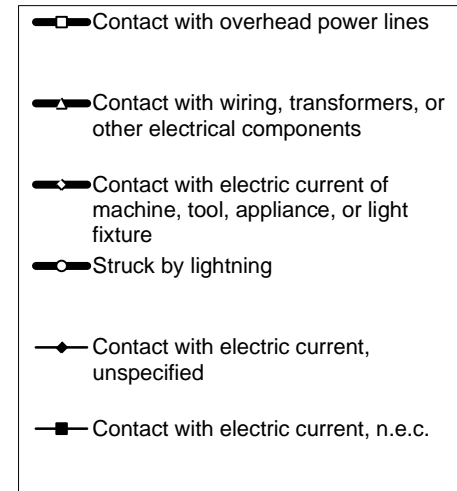
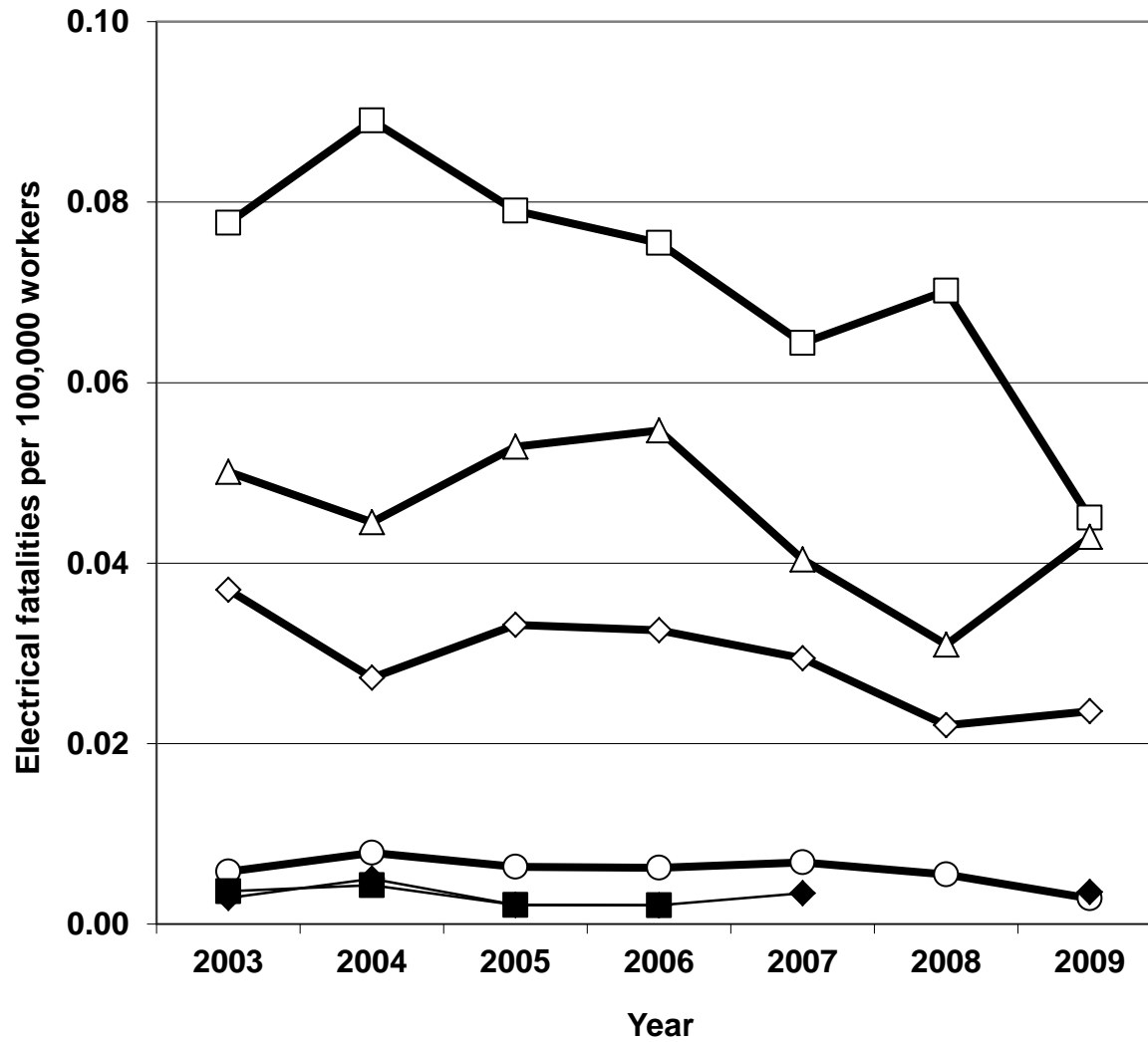


N (All causes) = 38,124  
N (Electrical causes) = 1,573

- Notes:
- 1. Rate = [Fatalities / Employment] x 100,000
  - 2. Data for 2009 are preliminary - other years are final.

Compiled by ESFI using data from the U.S. BLS, CFOI, 2003-2009, and the Current Population Survey

### Electrical Fatality Rates, by Event, 2003-2009



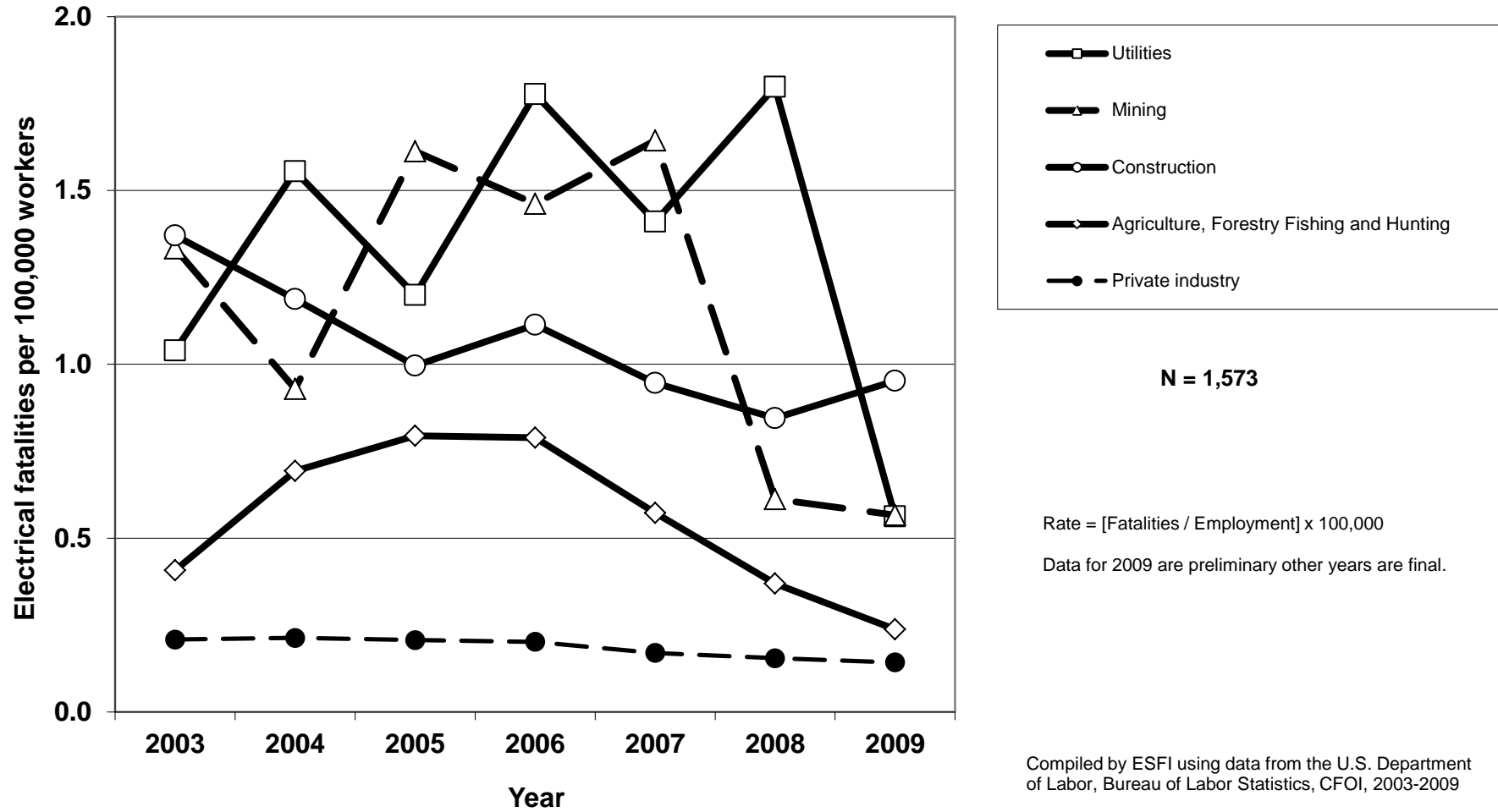
**N = 1,563**

Notes:

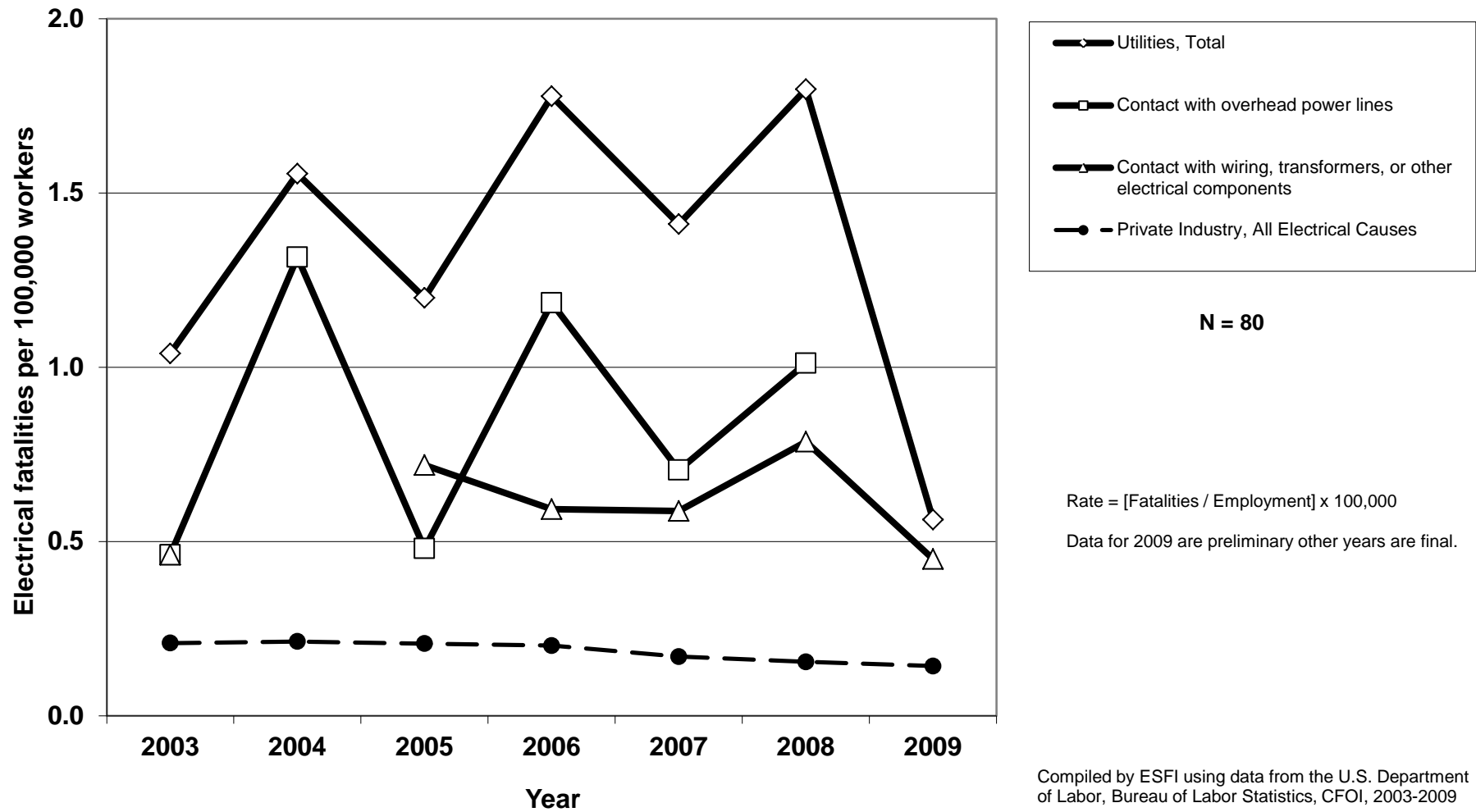
1. Rate = [Fatalities / Employment] x 100,000
2. Data for 2009 are preliminary - other years are final.

Compiled by ESFI using data from the U.S. BLS, CFOI, 2003-2009, and the Current Population Survey

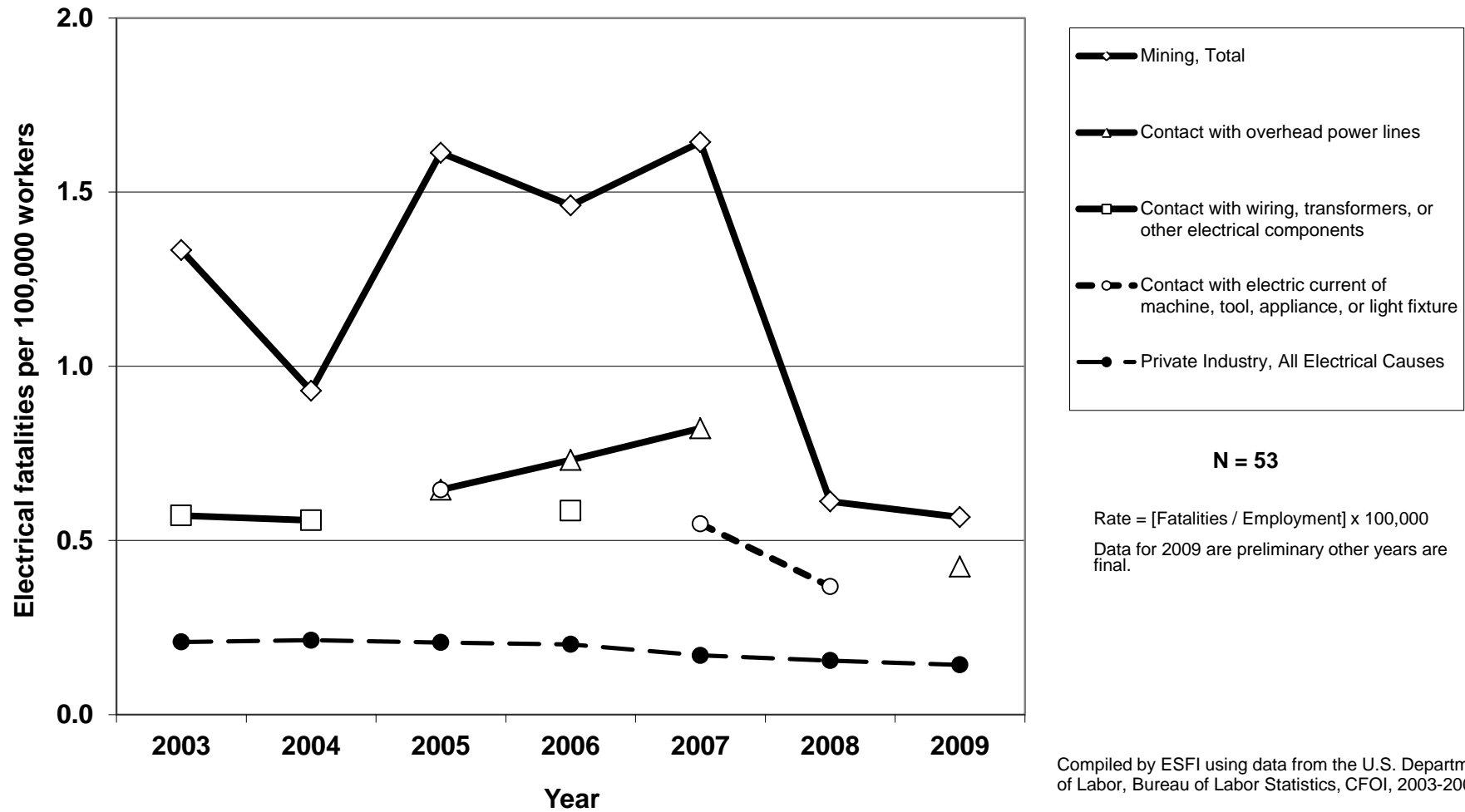
## Electrical Fatality Rates for Selected Industries, Private Industry, 2003-2009



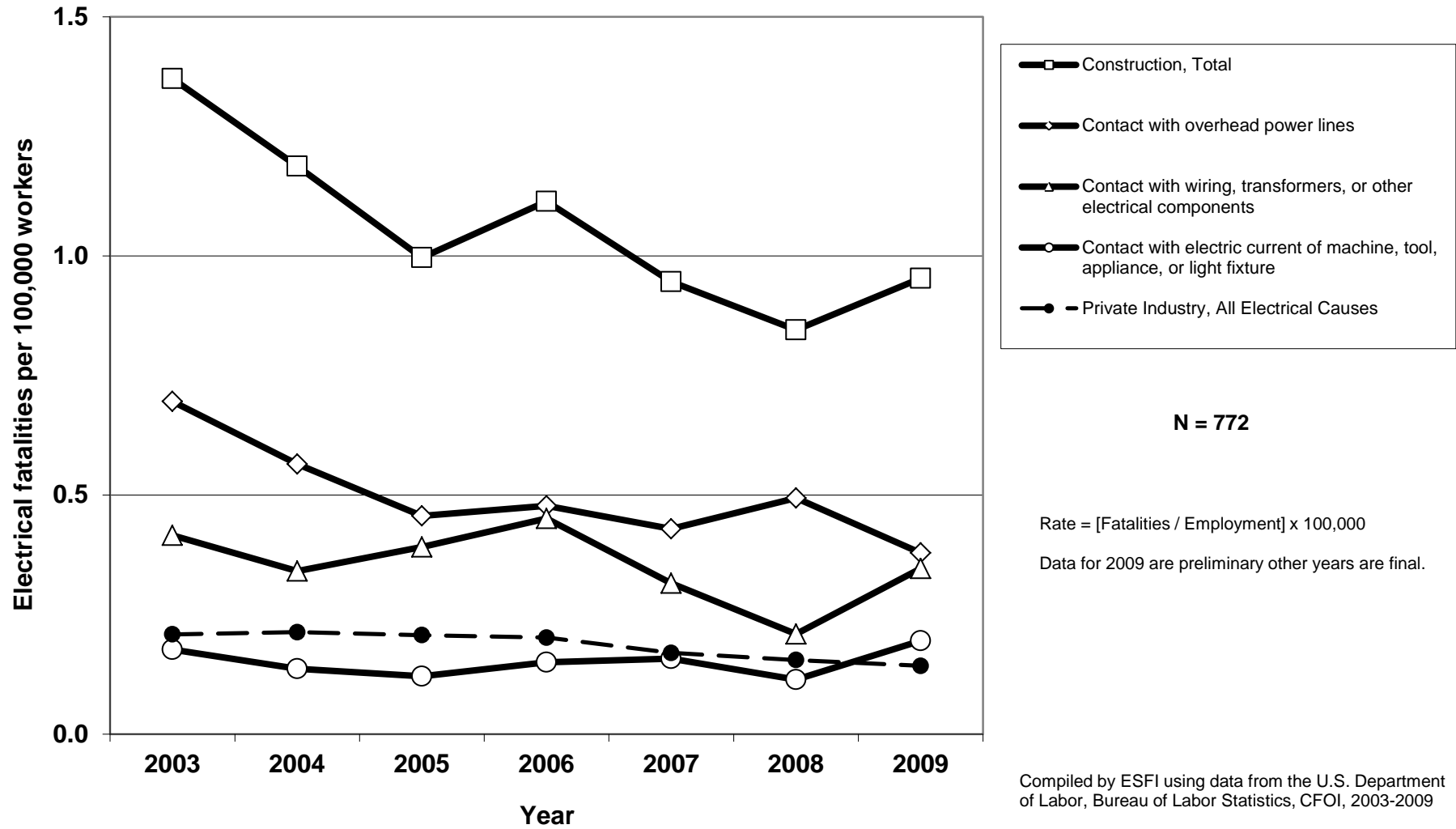
## Utility Industry, Selected Electrical Fatality Rates, by Event, 2003-2009



## Mining Industry, Selected Electrical Fatality Rates, by Event, 2003-2009

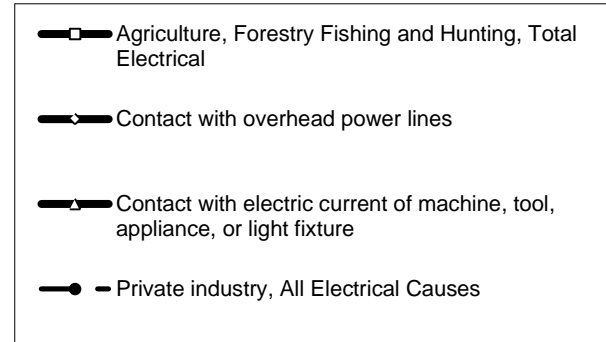
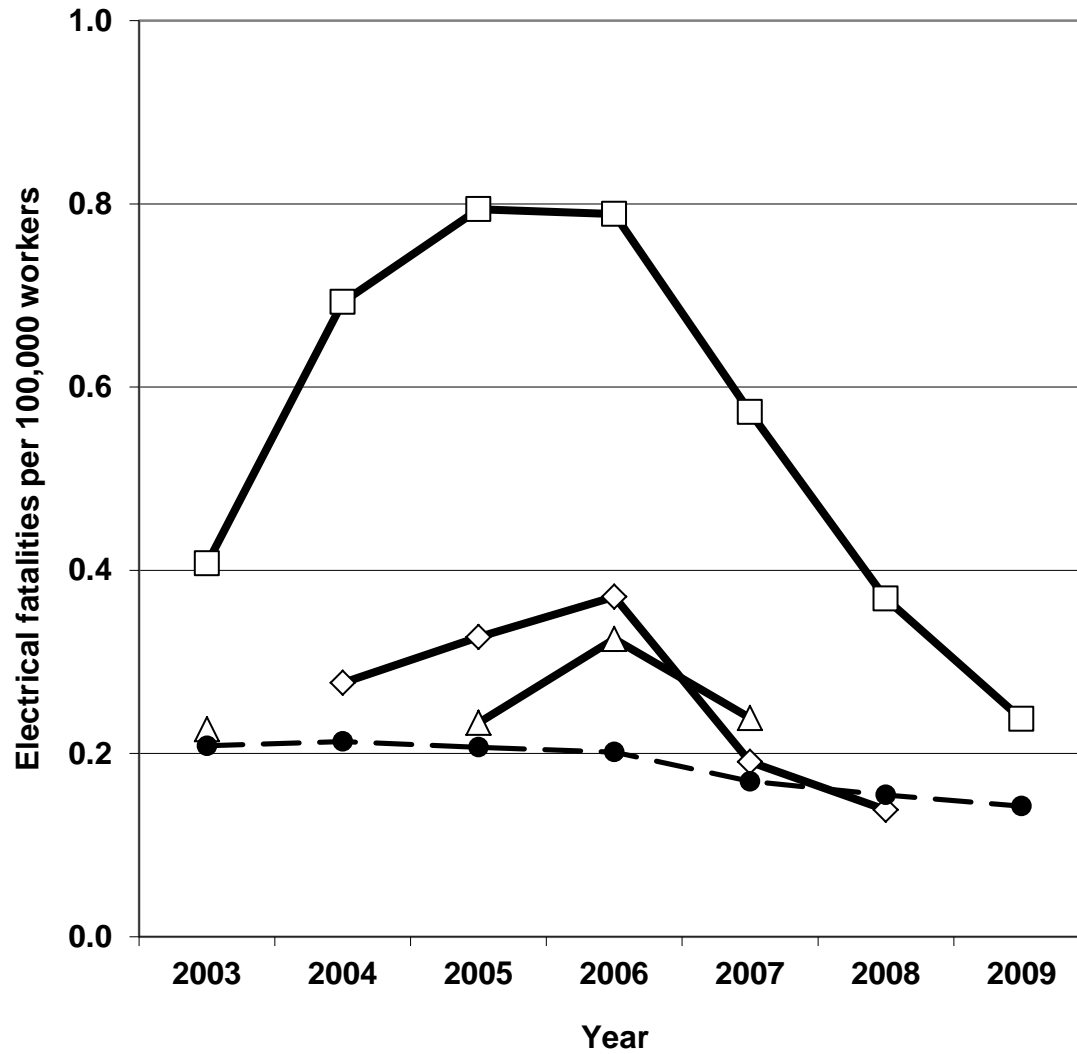


### Construction Industry , Selected Electrical Fatality Rates, by Event, 2003-2009





## Agriculture, Forestry Fishing and Hunting Industry, Selected Electrical Fatality Rates, by Event, 2003-2009



**N = 83**

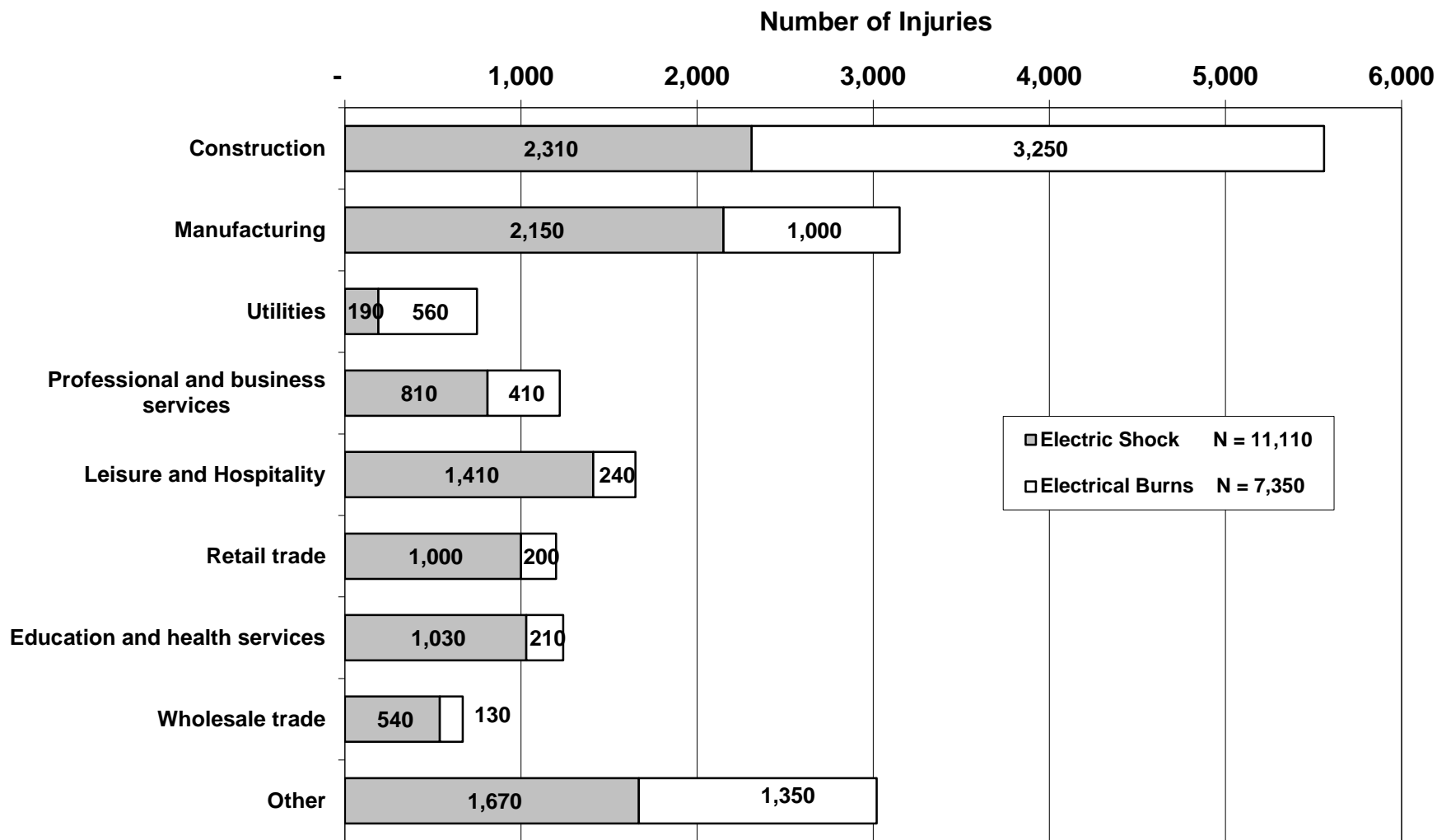
Rate = [Fatalities / Employment] x 100,000

Data for 2009 are preliminary other years are final.

Compiled by ESFI using data from the U.S. Department of Labor, Bureau of Labor Statistics, CFOI, 2003-2009

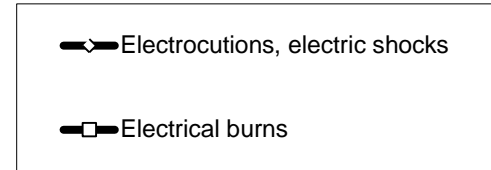
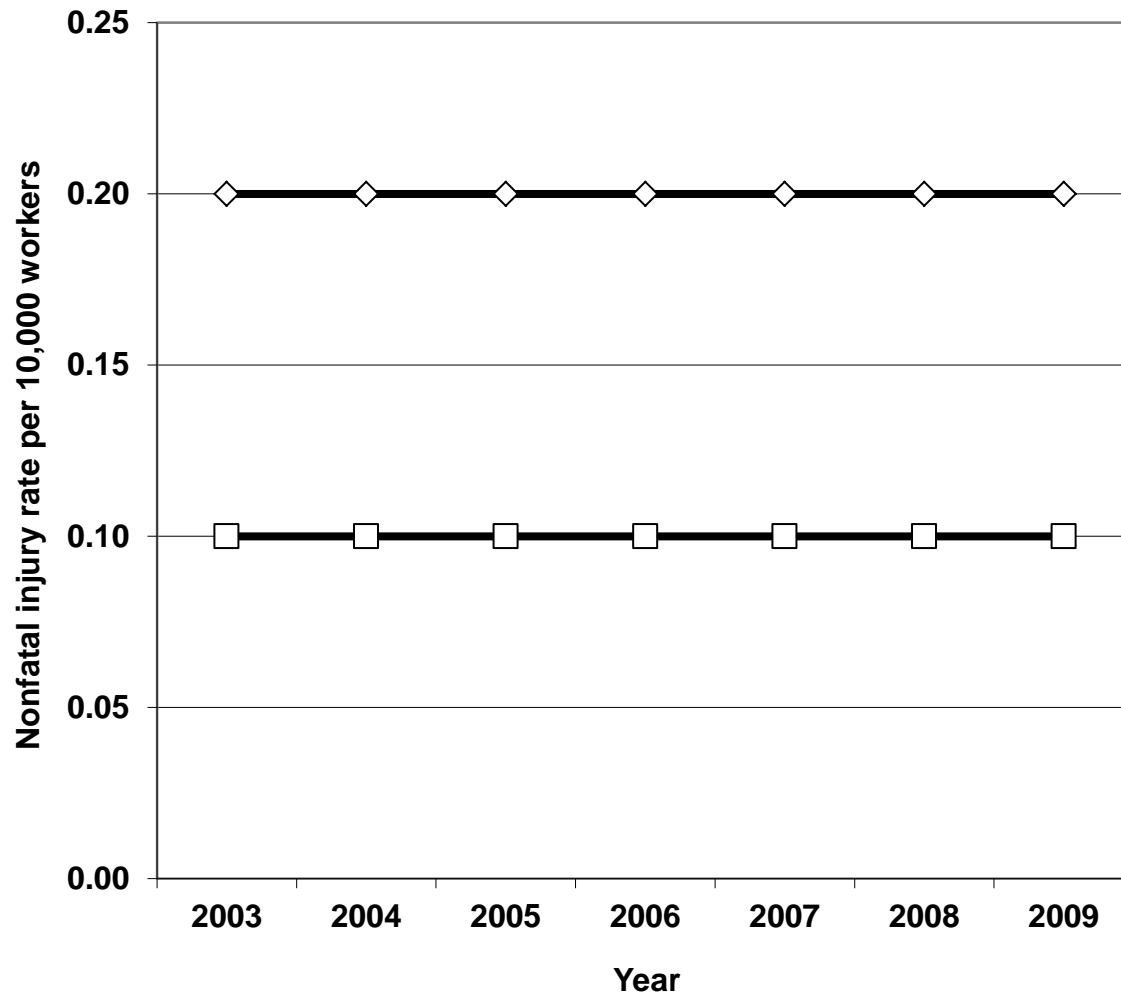
Fig. 8

## Nonfatal Electrical Injuries, Private Industry, by Nature of Injury, 2003-2009



Compiled by ESFI using data from the U.S. BLS, SOII, 2003-2009

## Nonfatal Electrical Injury Rates, by Nature of Injury, Private Industry, 2003-2009

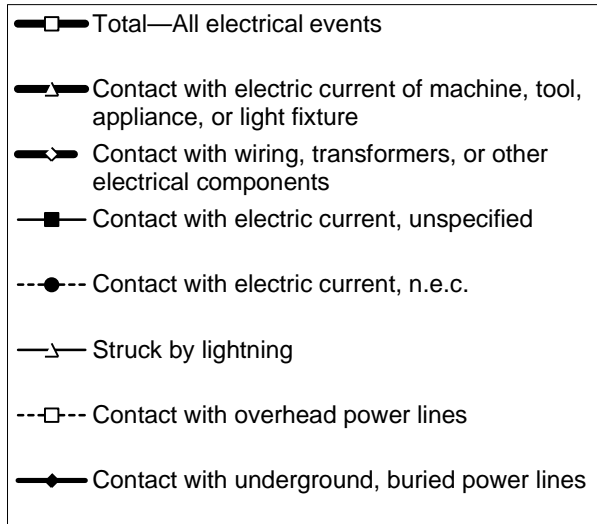
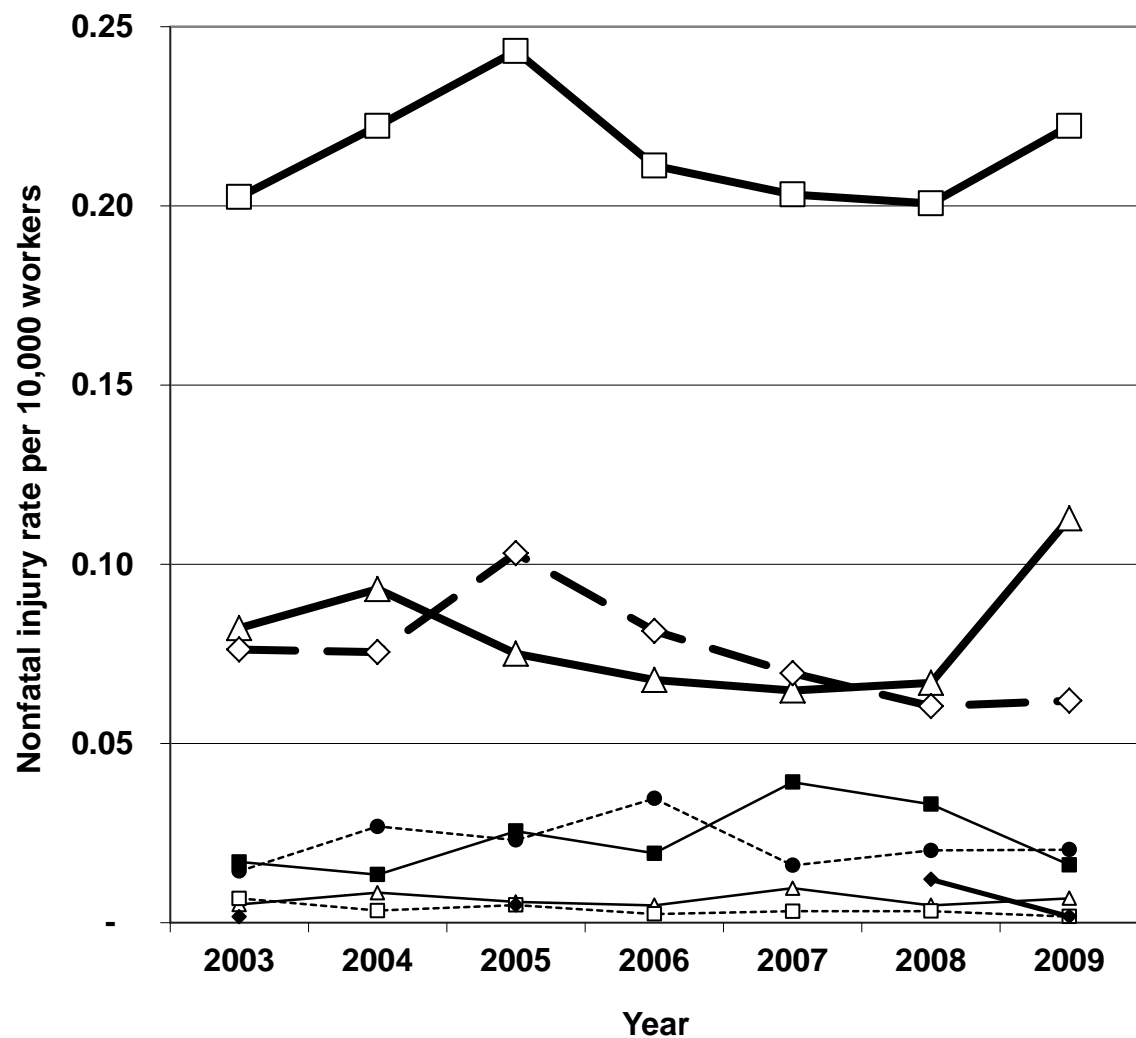


**N = 11,110 Electric shocks**  
**= 7,350 Electrical burns**

Employment based incidence rate is the number of injuries per 10,000 full-time workers and was calculated as:

$$\text{Rate} = [\text{Injuries} / \text{Employment}] \times 10,000$$

## Nonfatal Electrical Injury Rates, by Event, Private Industry, 2003-2009



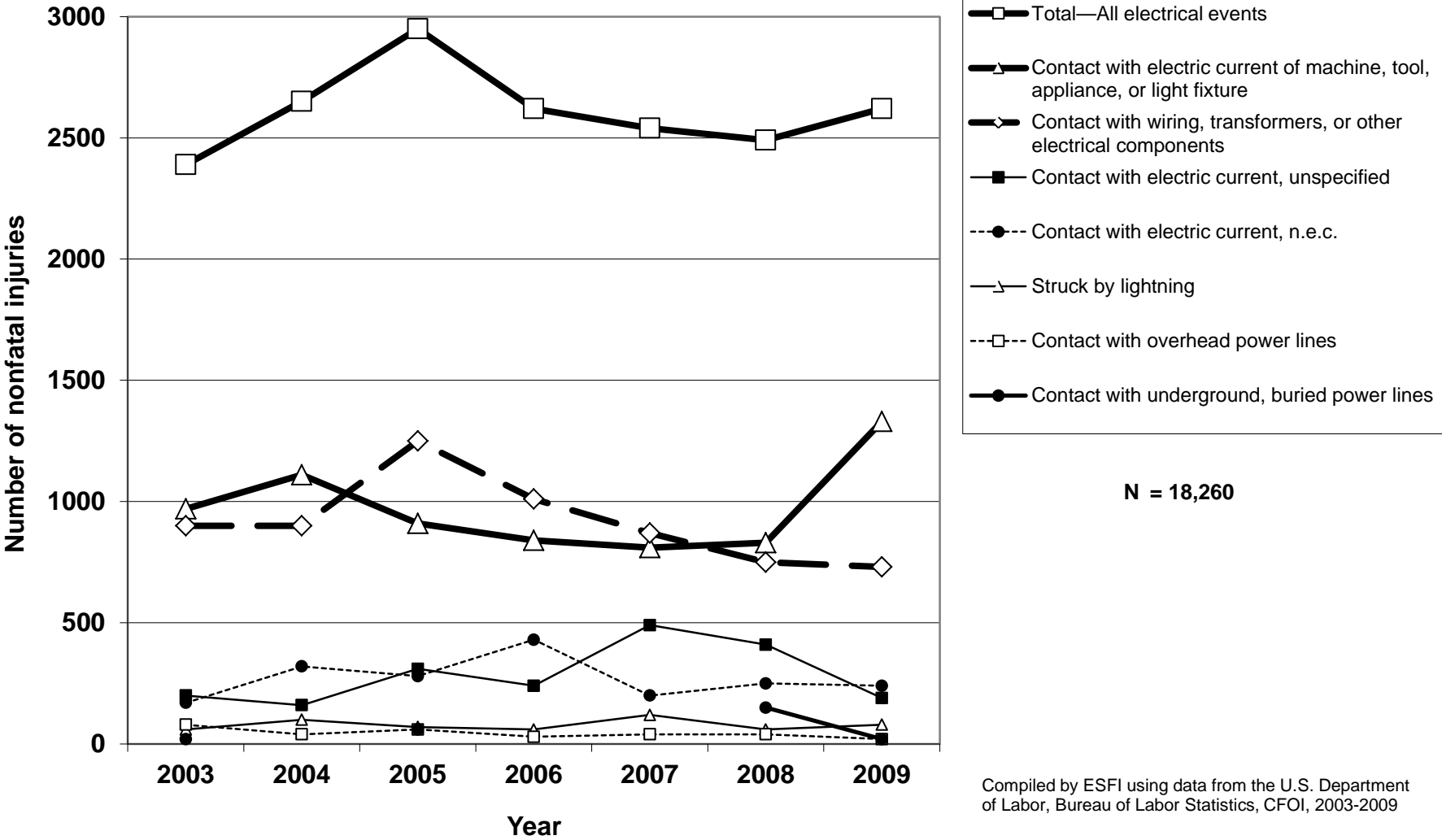
**N = 18,260**

Employment based incidence rate is the number of injuries per 10,000 full-time workers and was calculated as:

$$\text{Rate} = [\text{Injuries} / \text{Employment}] \times 10,000$$

Compiled by ESFI using data from the U.S. Department of Labor, Bureau of Labor Statistics, CFOI, 2003-2009

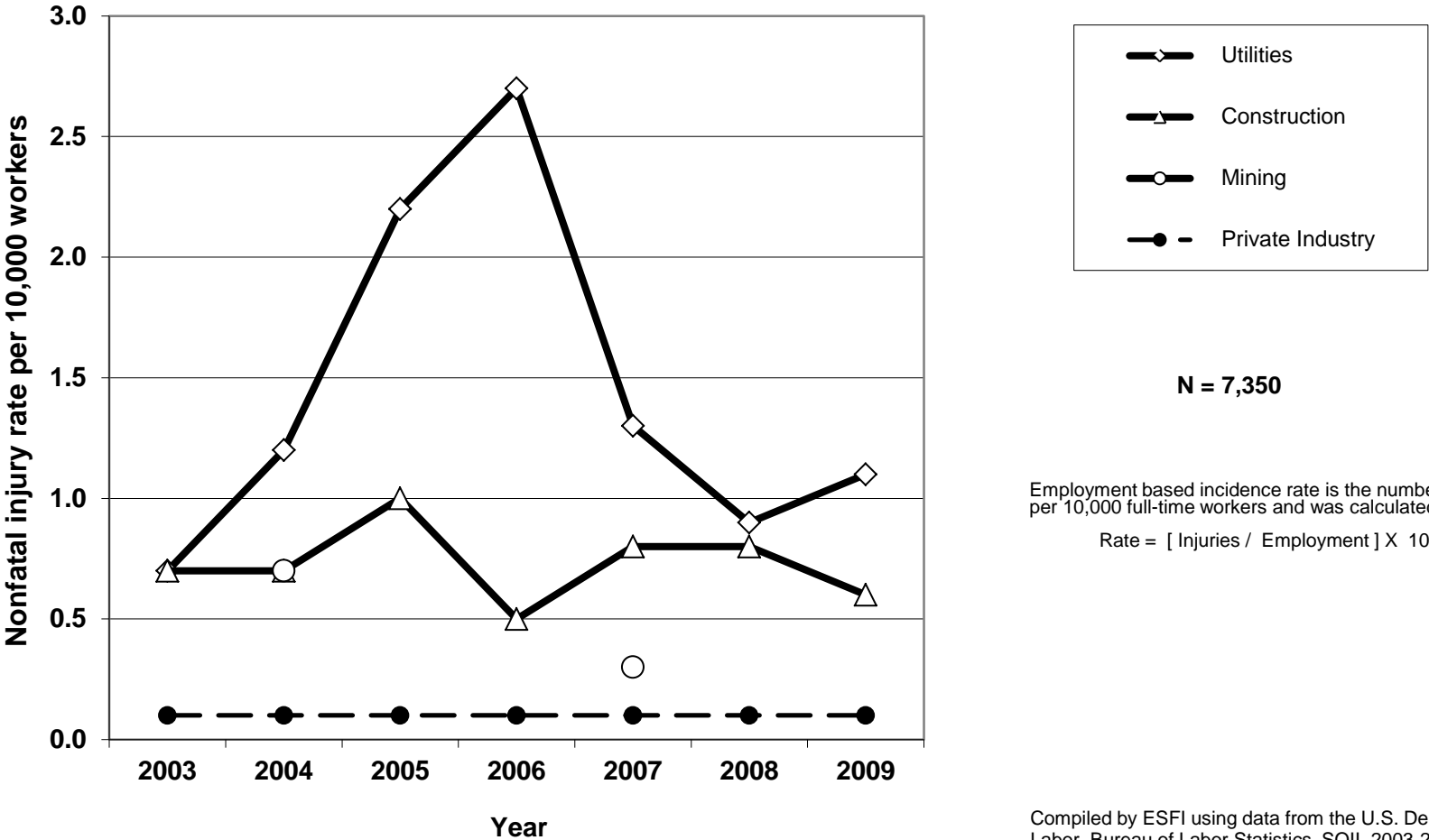
### Number of Electrical Injuries, By Event, Private Industry, 2003-2009



N = 18,260

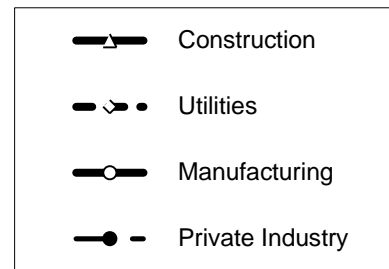
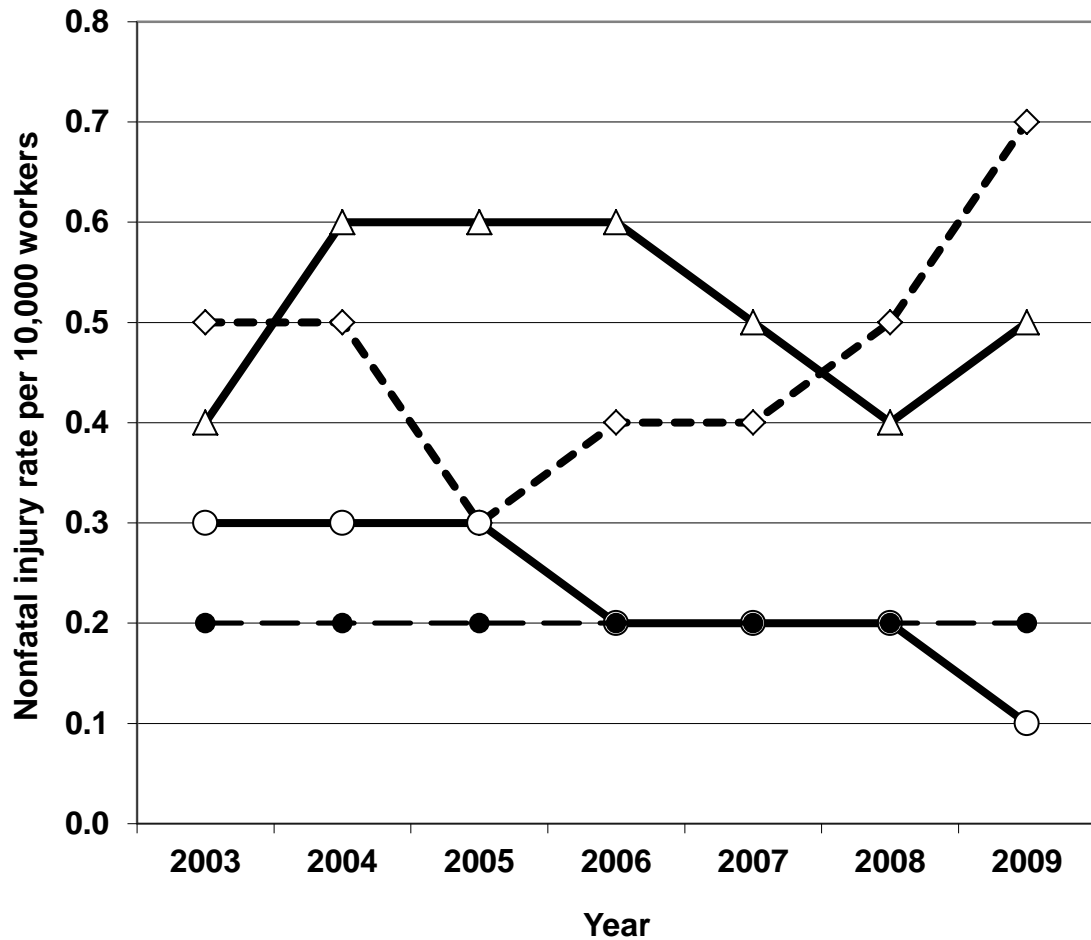
Compiled by ESFI using data from the U.S. Department of Labor, Bureau of Labor Statistics, CFI, 2003-2009

### Rates of Nonfatal Electric Burn Injury for Selected Industries, Private Industry, 2003-2009



Compiled by ESFI using data from the U.S. Department of Labor, Bureau of Labor Statistics, SOII, 2003-2009

## Rates of Nonfatal Electric Shock Injury for Selected Industries, Private Industry, 2003-2009



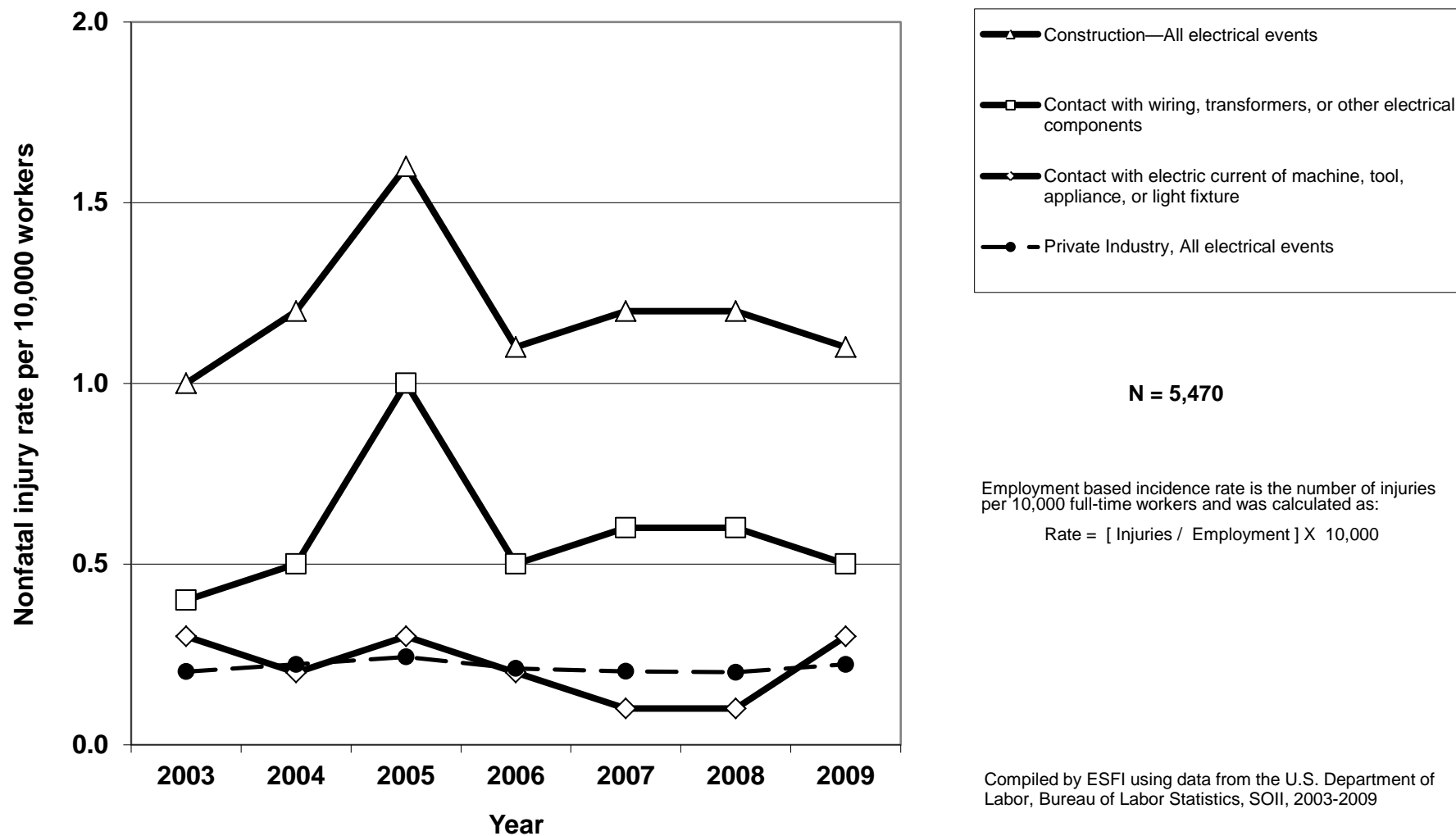
N = 11,110

Employment based incidence rate is the number of injuries per 10,000 full-time workers and was calculated as:

$$\text{Rate} = [ \text{Injuries} / \text{Employment} ] \times 10,000$$

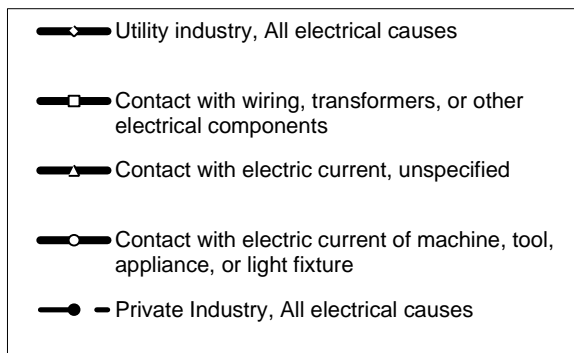
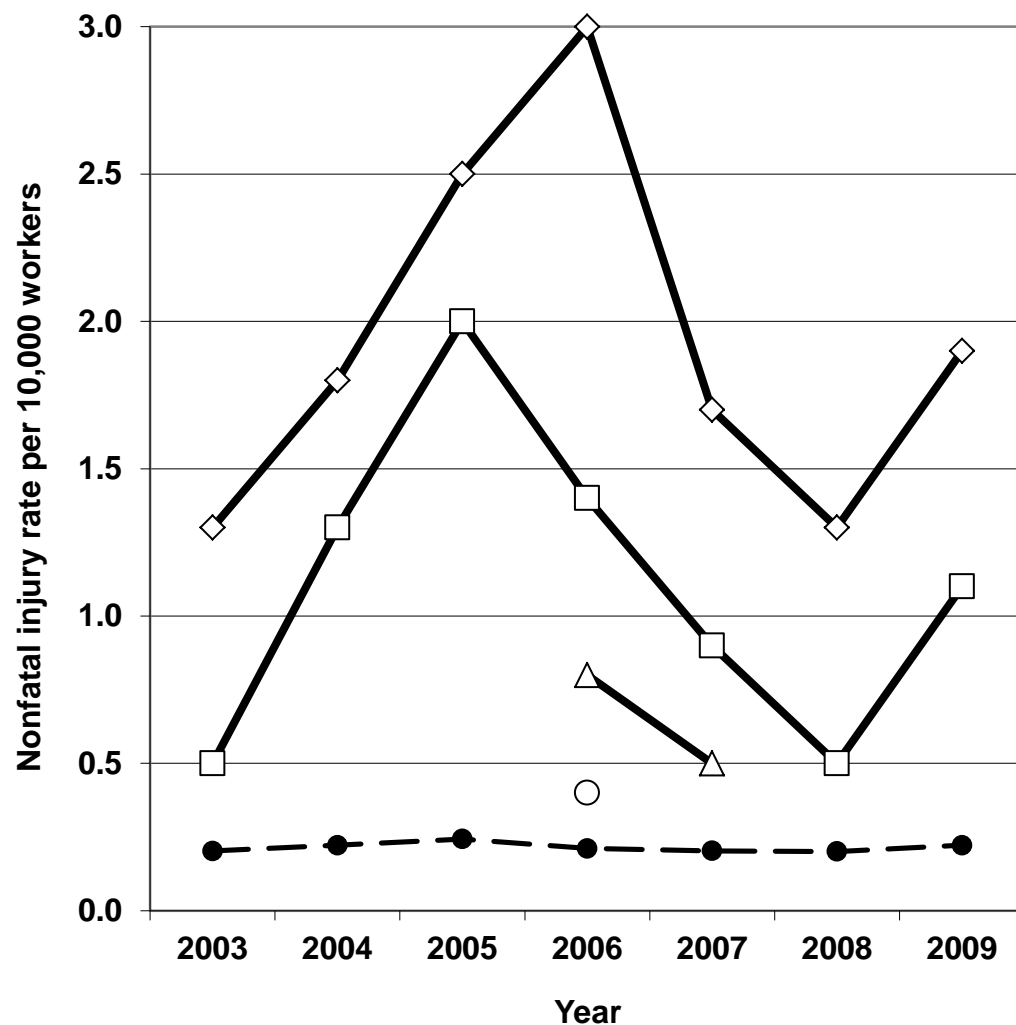
Compiled by ESFI using data from the U.S. Department of Labor, Bureau of Labor Statistics, SOII, 2003-2009

## Rates of Nonfatal Electrical Injury in the Construction Industry, by Event, 2003-2009





## Rates of Nonfatal Electrical Injury in the Utility Industry, by Event, 2003-2009



N = 730

Employment based incidence rate is the number of injuries per 10,000 full-time workers and was calculated as:

$$\text{Rate} = [\text{Injuries} / \text{Employment}] \times 10,000$$

Compiled by ESFI using data from the U.S. Department of Labor, Bureau of Labor Statistics, SOII, 2003-2009